

# Districting the Pleasant Valley Recreation and Parks District

September 8, 2021

# Election Systems

---

1. “At Large”
2. “From District” or “Residence” Districts
3. “By District”

**The California Voting Rights Act was written to specifically encourage by-district elections.**

# Districting Process

---

Step	Description
<b>Two Initial Hearings</b>	Held prior to release of draft maps. Education and to solicit input on the composition of districts.
<b>Release draft maps</b>	Maps must be posted at least 7 days prior to 3 <sup>rd</sup> hearing.
<b>Two hearings on draft maps</b>	Two meetings to discuss and revise the draft maps and to discuss the election sequence.
<b>Map adoption</b>	Final map must be posted at least 7 days prior to adoption.

# Redistricting Rules and Goals

---

## Federal Laws

Equal Population

Federal Voting Rights Act

No Racial Gerrymandering



## Traditional Redistricting Principles

Communities of interest

Compact

Contiguous

Visible (Natural & man-made) boundaries

Respect voters' choices / continuity in office

Planned future growth

# Demographic Summary

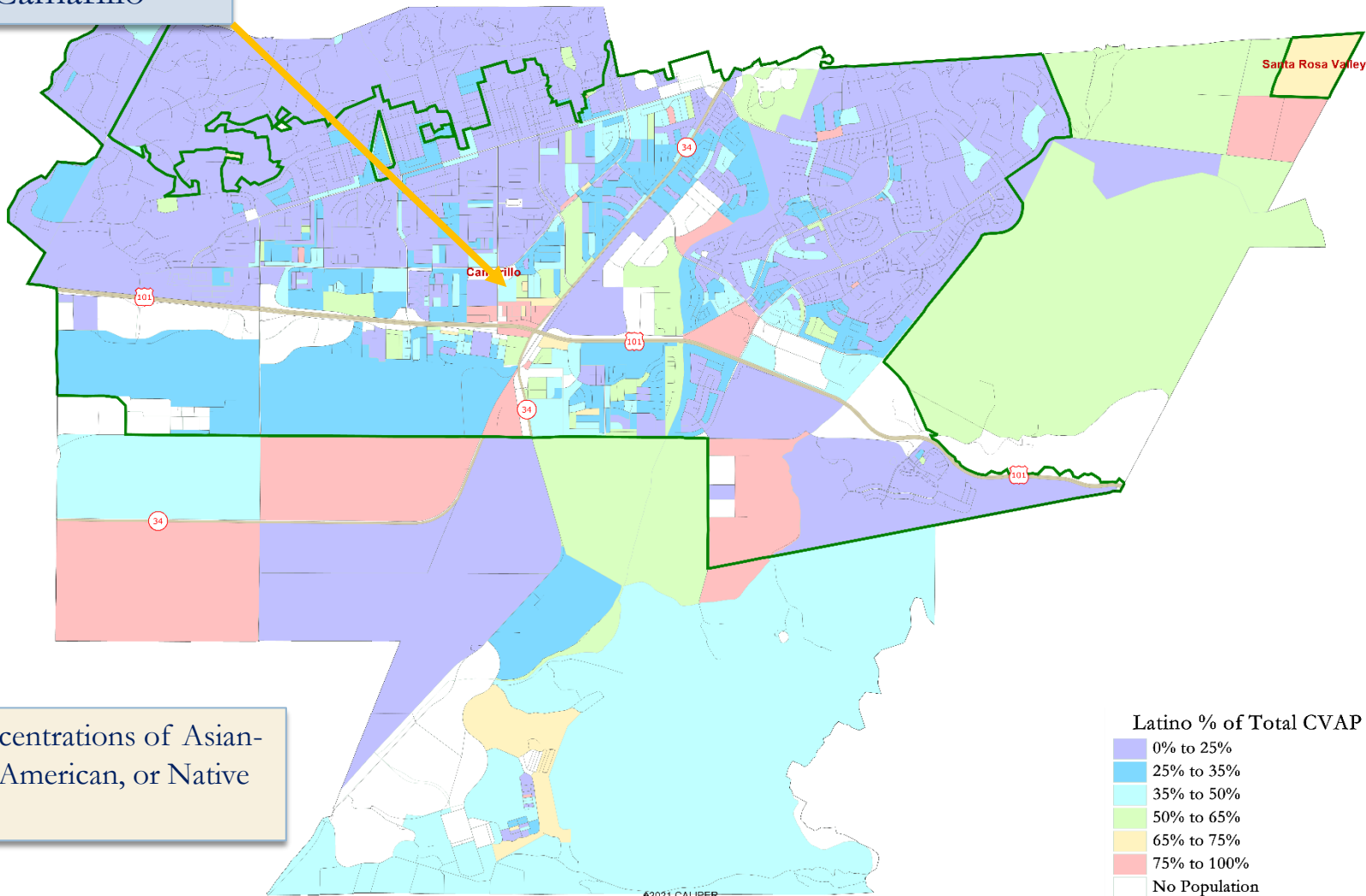
Official 2020 demographic data

Each of the five divisions must contain about 28,354 people.

Category	Field	Count	Pct	Category	Field	Count	Pct
	2020 Census Pop.	141,770			age0-19	33,531	24%
Total Pop (OMB Method)	Hisp. / Latino	36,415	26%	Age	age20-60	76,313	54%
	NH White	78,730	56%		age60plus	31,686	22%
	NH Black	4,289	3%		Immigration	immigrants	20,907
	Asian-Amer. / Pac Isl.	17,327	12%	naturalized		10,706	51%
Total Pop ("Any Part" Method)	Hisp. / Latino	27,759	20%	Language spoken at home	english	101,080	75%
	NH White	68,628	48%		spanish	19,465	14%
	Black / African-Amer.	4,122	3%		asian-lang	8,795	7%
	Asian-Amer. / Pac Isl.	14,416	10%		other lang	5,893	4%
Citizen Voting Age Pop	Total	108,330		Language Fluency	Speaks Eng. "Less than Very Well"	8,629	6%
	Hisp	21,479	20%	Education (among those age 25+)	hs-grad	32,959	37%
	NH White	71,579	66%		bachelor	24,077	27%
	NH Black	2,457	2%		graduatedegree	17,851	20%
	Asian/PacIsl.	10,566	10%	Child in Household	child-under18	12,112	24%
Voter Registration (Nov 2020)	Total	91,231		Pct of Pop. Age 16+	employed	75,589	62%
	Latino est.	16,411	18%	Household Income	income 0-25k	8,274	17%
	Spanish-Surnamed	14,742	16%		income 25-50k	7,007	14%
	Asian-Surnamed	3,819	4%		income 50-75k	6,426	13%
	Filipino-Surnamed	1,324	1%		income 75-200k	20,873	42%
	NH White est.	66,836	73%		income 200k-plus	7,552	15%
	NH Black	2,040	2%	Housing Stats	single family	39,514	73%
Total	78,598	86%	multi-family		13,783	25%	
Latino est.	13,223	17%	rented		21,516	43%	
Spanish-Surnamed	11,878	15%	owned		28,616	57%	
Voter Turnout (Nov 2020)	Asian-Surnamed	3,193	4%				
	Filipino-Surnamed	1,115	1%				
	NH White est.	58,665	75%	Total population data from the 2020 Decennial Census. Surname-based Voter Registration and Turnout data from the California Statewide Database. Latino voter registration and turnout data are Spanish-surname counts adjusted using Census Population Department undercount estimates. NH White and NH Black registration and turnout counts estimated by NDC. Citizen Voting Age Population, Age, Immigration, and other demographics from the 2015-2019 American Community Survey and Special Tabulation 5-year data.			
	NH Black	1,709	2%				
	Total	83,130					
	Latino est.	13,768	14%				
Spanish-Surnamed	12,368	13%					
Asian-Surnamed	2,170	4%					
Voter Turnout (Nov 2018)	Filipino-Surnamed	707	1%				
	NH White est.	47,040	78%				
	NH Black est.	975	2%				

# Latino CVAP

Latinos are concentrated in the center of Camarillo



©2021 CALIPER

No geographic concentrations of Asian-American, African-American, or Native American CVAP.

# Defining Communities of Interest

---

## 1<sup>st</sup> Question: What defines your community?

- ❑ Geographic Area, plus
- ❑ Shared issue or characteristic
  - ❑ Shared social or economic interest
  - ❑ Impacted by county policies
- ❑ Tell us “your community’s story”

## 2<sup>nd</sup> Question: Would this community benefit from being “included within a single district for purposes of its effective and fair representation”?

- ❑ Or would it benefit more from having multiple representatives?

# Public Hearing & Discussion

---

- ❑ What is your neighborhood or community of interest and what are its boundaries?
- ❑ What other notable areas are in the District, and what are their boundaries?