

**PLEASANT VALLEY RECREATION & PARK DISTRICT  
ADMINISTRATION BUILDING, ROOM 6  
1605 E. BURNLEY ST., CAMARILLO, CALIFORNIA**

**LONG RANGE PLANNING COMMITTEE  
AGENDA**

**July 14, 2022**

**2:00 P.M.**

Please Note: In keeping in alignment with current orders from the Ventura County Health Officer, face coverings are not required but are welcomed and encouraged in indoor public settings and businesses. PVRPD thanks you for your cooperation and understanding.

This meeting will take place both in person and remotely in accordance with Government Code section 54953(e) et seq. (AB 361). Members of the public can participate in the meeting by choosing one of the following options:

1. Attend in person or
2. Join via Zoom -

**Meeting Link: <https://us06web.zoom.us/j/87649951301>**

**Webinar ID: 876 4995 1301**

**Phone Number: 1-669-900-6833**

- a. Cell Phone/Computer with Microphone: Click on the Zoom link included above. Enter your name so we may call on you when it is your turn to speak. The Chair will ask if anyone wishes to speak on the item. At that time, raise your hand by clicking the “Raise Hand” button. Follow the instructions below regarding speaking.
- b. Phone – If you wish to make a comment by phone during the public comment section of the meeting or on a specific agenda item, please call in to the listed phone number above and when prompted, enter the Webinar ID. You will then be admitted to the meeting and your line will be muted. The Chair will ask if anyone wishes to speak on the item. At that time, raise your hand by dialing \*9. Then, follow the speaking instructions below.

**Speaking Instructions**

When it is your turn to speak, the Chair will call your name or the last four digits of the phone number you are calling from. You will have three minutes to address the Committee. **Please ensure all background noise is muted (TV, radio, etc.)** You will be prompted to unmute your microphone/phone. Unmute your device and begin by stating your name. After three minutes has elapsed your microphone will be muted and the next speaker will be invited to speak.

1. **CALL TO ORDER**
2. **APPROVAL OF AGENDA**
3. **PUBLIC COMMENTS**
4. **DISC GOLF DISCUSSION**
5. **LAS POSAS EQUESTRIAN PARK UPDATE**
6. **BIKE TRAIL UPDATE**
7. **ORAL COMMUNICATIONS**
8. **ADJOURNMENT**

**Note:** Written materials related to these agenda items are available for public inspection in the Office of the Clerk of the Board located at 1605 E. Burnley Street, Camarillo during regular business hours beginning the day preceding the Committee meeting.

**Announcement:** Should you need special assistance (i.e. a disability-related modification or accommodations) to participate in the Committee meeting or other District activities (including receipt of an agenda in an appropriate alternative format), as outlined in the Americans With Disabilities Act, or require further information, please contact the General Manager at 482-1996, extension 114. Please notify us 48 hours in advance to provide sufficient time to make a disability-related modification or reasonable accommodation.

**PLEASANT VALLEY RECREATION AND PARK DISTRICT  
STAFF REPORT / AGENDA REPORT**

**TO: LONG RANGE PLANNING COMMITTEE**

**FROM: MARY OTTEN, GENERAL MANAGER**  
**By: Dylan Gunning MPA CRPD, Administrative Analyst**

**DATE: July 14, 2022**

**SUBJECT: CONSIDERATION OF DISC GOLF COURSE**

**SUMMARY**

Members of the Disc Golf Community have approached Pleasant Valley Recreation and Park District (PVRPD) to build a permanent Disc Golf course within PVRPD boundaries.

**BACKGROUND**

Disc Golf started with people using Frisbees and aiming at targets made up of trees, trash cans, light poles, pipes, and whatever was handy. Disc golf is similar to traditional golf, but instead of using clubs and balls aiming for a hole, players use discs and aim for a basket, a pole extending up from the ground with chains and a basket where the disc lands. The game's object is like regular golf by completing each hole in the fewest throws, starting from a tee area and finishing with the disc coming to a rest in the basket.

Like other outdoor activities, Disc Golf has increased in popularity due to the COVID-19 pandemic. Membership in the Professional Disc Golf Association (PDGA) grew from 53,366 in 2019 to 71,016 in 2020, increasing by 33%. Both Conejo Recreation & Park District (CRPD) and Rancho Simi Recreation and Park District (RSRPD) have multiple permanent Disc Golf courses. CRPD has Rabbit Flats Disc Golf Course and Sapwi Trails Disc Golf Course. RSRPD has courses at Sycamore Park, Sequoia Park, and Chaparral Park. The City of Moorpark just introduced a brand-new Disc Golf practice area at Arroyo Vista Community Park.

Currently, Disc Golf players are already playing within our parks, either playing using random objects within the park to throw at or setting up portable nets. For example, Conejo Disc Golf Club has already designed a nine-hole course at Heritage Park that they bring portable baskets to play.

Disc Golf enthusiasts have spoken during the public comment period at the PVRPD Board meeting and have presented potential course information at the February Long Range Committee meeting.

On Wednesday, April 13, Park Supervisor Brandon Lopez, Recreation Supervisor Lanny Binney, and Administrative Analyst Dylan Gunning met to discuss Disc Golf opportunities at all 28 of the District's parks. When looking at the parks, acres, amenities, and current usage were all considered. Generally, five to 10 areas are needed for a nine-hole course and 20 to 25 acres for an 18-hole course. As a rule of thumb, one acre per basket is a good starting point when considering building a course.

After looking at the pros and cons of each park, four parks were marked as good locations, six parks were marked as possible locations, and 18 parks were marked as not suitable locations. The district staff recommends four parks for additional review: Valle Lindo, Heritage Park, Lokker Park, and Encanto Park. Adolfo, Camarillo Grove, Foothill, Pitts Ranch, Quito, and Woodside are the six with possible consideration.

The Park Supervisor, Recreation Supervisor, and Administrative Analyst visited Valle Lindo, Heritage Park, Lokker Park, and Encanto Park for future consideration.

Valle Lindo is recommended as a prime location for Disc Golf with its 10 acres, restroom facilities, and possible challenging layout for a course among the trees. The proposed path would be on the park's perimeter, including the northern and eastern sides among the trees. The conversion to include Disc Golf at Valley Lindo would require limited adjustments to the current park. Some negative elements include limited parking, soccer programs offered in the open space, and the neighboring school.

Heritage Park is recommended as a prime location for Disc Golf with its 9 acres, challenging layout for a course amount the trees; the Conejo Disc Golf Club already uses it, and PVRPD has used it as a temporary Disc Golf course in the past. The conversion to include Disc Golf at Heritage would require limited adjustments to the current park. The proposed path would be on the perimeter of the park. Some negative elements include street parking only. Soccer programs are offered in the open space and have no restrooms.

Lokker Park is recommended as a prime location for Disc Golf with 7 acres. The proposed path would be on the perimeter of the park. While the park is used for sports practice, the park offers plenty of perimeter space and unused areas ideal for Disc Golf. Some negative elements include no restroom and some soccer usage.

Encanto Park offers a different opportunity for Disc Golf than the three mentioned. It is a smaller park of only 3 acres. However, it provides ample street parking, limited usage, and large walls surrounding the park. The proposed path would be on the park's perimeter, with the proposed course using fewer baskets but nine tee locations allowing players to throw from different locations to the same basket, creating the nine holes. Some negative elements include no restroom, some outdoor teacher lead exercise classes, and the limited size of the park.

Each park is slated for possible turf mitigation, which was a considering factor in the proposed locations of the Disc Golf course. Large portions of the course would align with areas where turf would be removed, providing places where foot traffic would not occur.

At any of these locations, multiple courses at the same park could be designed during the design phase, including using the same tee locations. This approach could have different skill levels where one basket is positioned for beginners and the other for advanced players. Offering dual-use courses would let players do multiple rounds for the visiting playing, thus prolonging their visit. This can be accomplished by having double the number of baskets. Another approach could be explored by installing multiple ground sleeves for the baskets allowing the baskets to be

repositioned by District staff from time to time. However, there can be disadvantages for dual courses, including baskets being too close to each other and the added expensive of equipment.

The Disc Golf Association provided PVRPD quotes for permanent baskets, including Mach 2, Mach 5, Mach 7, and Mach X style baskets. The price range is \$3,615.93 to \$4,992.48 for an entire 9-hole course.

<b>Basket Style</b>	<b>Cost of 9 Baskets</b>
Mach 2	\$3,615.93
Mach 5	\$4,309.23
Mach 7	\$4,500.85
Mach X	\$4,992.48

Below is a comparison of the different styles of baskets.

<b>Features</b>	<b>Mach 2</b>	<b>Mach 5</b>	<b>Mach 7</b>	<b>Mach X</b>
<b>Number of Chains Strands</b>	18	24	28	40
<b>Rows of Chain</b>	2 Rows	3 Rows	3 Rows	3 Rows
<b>Metal Finish</b>	Hot-Dipped Galvanized			
<b>Color Powder Coating Options</b>	No	Yes	Yes	Yes
<b>Warranty</b>	20 years	25 years	25 years	25 years
<b>PDGA Tournament Rated</b>	Standard	Championship	Championship	Championship

**Mach 2:** The Mach 2-disc golf basket is an excellent entry-level outdoor golf basket for backyards, schools, colleges, or recreational courses. This basket is a portable option but quoted with the in-ground install kit making it a permanent basket.

**Mach 5:** The Mach 5-disc golf basket is the perfect choice for college campuses, city and state parks, high-use disc golf courses, and Championship tournament play.

**Mach 7:** Visibility Ring Shielded from Discs & Providing A Tighter Focus

**Mach X:** The Mach X disc golf basket is the most advanced and innovative disc golf basket. Designed with the input of top professionals, it has been designed to handle the aggressive and demanding play of the world’s best players.

Additions can be included with the course, including number signs for the baskets, course signs, and rule signs. Each basket would need a number plate to indicate which hole it was. They are

\$30- \$40 each—an addition of \$290 to \$360 to the course. Depending on the style, tee signs and rule signs range from \$40 to \$105—an estimate of \$1,150 plus or minus to be added.

Our parks crew could complete the installation. Each basket installation involves digging a hole, adding a bag of quikrete, and inserting the basket.

The District must consider the liability of building a Disc Golf course. District staff reached out to our insurance provider, CAPRI, regarding Disc Golf. CAPRI recommends that the course has appropriate signage warning the public that (1) they are on a Disc Golf course and (2) that they play at their own risk. Signage is needed outlining the course rules (i.e., identifying out of bounds and course directions) and general park rules (i.e., open dawn to dusk).

If the park includes a playground, make sure that the disc is not thrown at the playground but rather away, or if need be parallel to the playground to avoid discs from entering the playground. In these cases, plenty of signage for both the disc golf player that the playground area is out of bounds and signage for the playground users of the disc golf area of play.

District staff presented these findings to the Long Range Committee on May 11, 2022 where it was determined to work with the local experts to come up with proposed course maps.

## **ANALYSIS**

Recreation Supervisor Lanny Binney, Park Supervisor Brandon Lopez, and Administrative Analyst Dylan Gunning met with Joe Zimmerly and Mike Bryne, local disc golf players from the Conejo Disc Golf Club, to tour Heritage Park, Valle Lindo Park, and Lokker Park following the recommendation of the Long Range Committee. The group reviewed each park location for possible locations to place baskets, tee locations, and the path of travel.

After meeting with Joe and Mike, District staff requested they develop recommendations on the number of baskets, locations, and path of travel that would provide a fun, safe course for the community to enjoy. The District received two maps for Heritage Park, Valley Lindo Park. The Disc Golf Club did not provide a map for Lokker Park by the time of posting the report.

### **Heritage Park**

At Heritage Park, the group provided a map with a 9-hole course. They stated that as a club, they feel the best option is Heritage Park. It has lots of space, making it easy to work around and with parkgoers. This 9-hole loop would be played 45 minutes, keeping things short in time commitment.”

From the District’s perspective, Heritage has positives and negatives to including a disc golf course within the park.

#### **Positives**

- Experience with District organized Disc Golf event here with 30 participants
- The size and the course design would have limited impact on other park users.
- AYSO reserves the open space Monday – Thursday from 4:30 pm – 7:30 pm for practice with approx. 10-12 people. While it is reserved, they are not there daily.

### **Negatives**

- Limited street parking
- No restrooms
- The only rental space is the open space.
- AYSO reserves the open space Monday – Thursday from 4:30 pm – 7:30 pm for practice with approx 10-12 people. While it is reserved, they are not there daily.

### **Valle Lindo**

At Valle Lindo, the group provided a map with a 6-hole course. Their design also provided for the option to add additional baskets along similar paths but increased the challenge. They stated that “Valle Lindo is a great park! A significant upside is the amount of foot traffic the park has. The downside of having lots of people also means that there is a greater chance of people getting hit by a disc.”

From the District’s perspective, Valle Lindo has positives and negatives to including a disc golf course within the park.

### **Positives**

- Increased street parking compared to Heritage
- Has restrooms
- Rental spaces include the amphitheater, open space, and three picnic shelters which could be used if large groups of Disc Golf players want to rent out areas for events.
- Large section of course planned for turf removal

### **Negative**

- Street parking only
- Rental spaces, including the amphitheater, open space, and three picnic shelters which means more park users will be present.

The club mentioned that their club's #1 goal when starting this process is that having any baskets in the ground is better than none. The club’s #2 goal is to develop a strong relationship with our District as we work together to make this happen.

To learn more about the cost of installing a Disc Golf Course, the District received a quote from Innova Disc Golf for baskets. Innova baskets are currently being used in Rancho Simi Recreation & Park District. Innova quoted nine baskets for a total of \$4,483.04, comparable in style to the Disc Golf Association Mach 7 baskets quoted at \$4,500.85. This comparison provides the District with information that shows the prices of baskets across the industry are similar.

### **FISCAL IMPACT**

No fiscal impact at this time.

### **STRATEGIC PLAN COMPLIANCE**

Meets 2021 Strategic Plan Goal 3.1: Renovate and modernize existing parks and recreational facilities to ensure all parks provide an adequate range and supply of active leisure facilities to meet the growth and diversity in population, programming trends, and new design standards.

### **RECOMMENDATION**

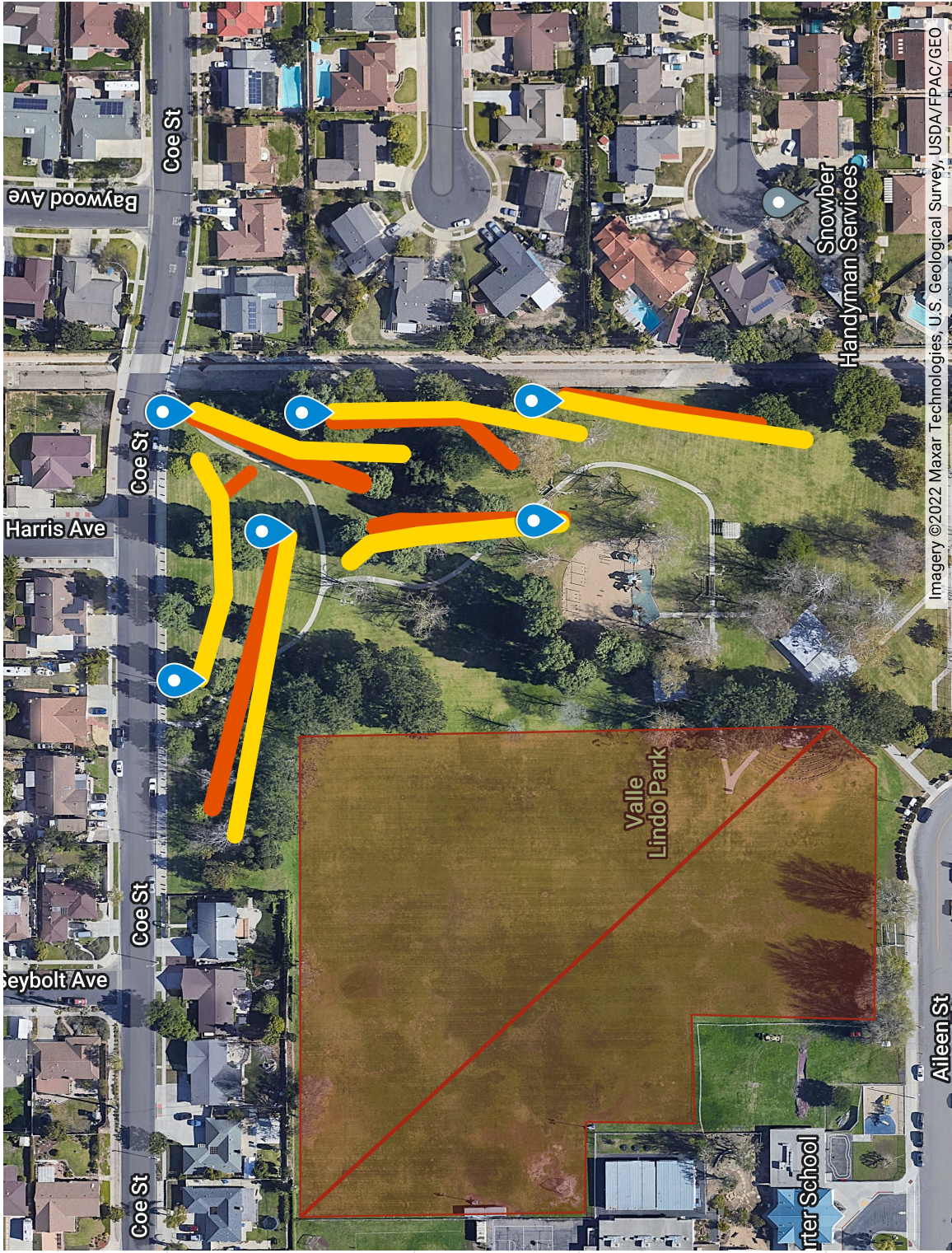
It is recommended the Long-Range Planning Committee provide guidance and direction for the Disc Golf item and the next steps.

### **ATTACHMENTS**

- 1) Valle Lindo Proposal Map (1 page)
- 2) Heritage Proposal Map (1 page)



# Valle Lindo - Disc Golf Course - 6 Hole Layout



Imagery ©2022 Maxar Technologies, U.S. Geological Survey, USDA/FPAC/GEO

OFF LIMITS

-  OFF LIMITS
-  OFF LIMITS

Hole 1

-  Tee #1
-  Basket #1
-  Line 4
-  Line 5




Hole 2

-  Tee #2
-  Basket #2

Hole 3

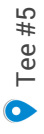
-  Tee #3
-  Basket #3
-  Line 3
-  Line 4

Hole #4

-  Tee #4
-  Basket #4
-  Line 3
-  Line 4

This is our 6 hole, 2 basket layout for Valle Lindo Park.

Hole #5



Tee #5



Hole #5

---

Hole #6



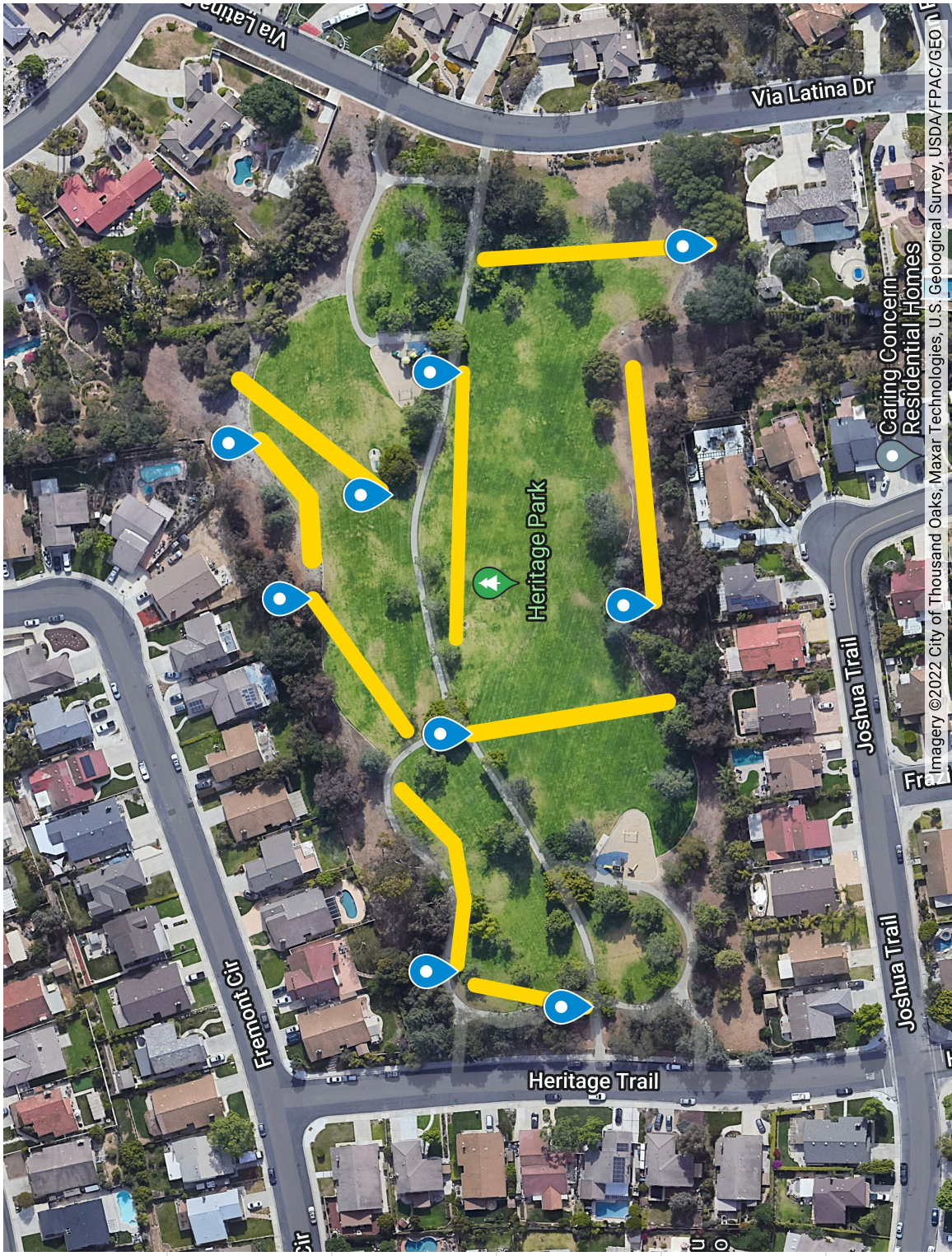
Tee #6



Basket #6



# Heritage Park - 9 Hole Layout



Hole #2

-  Tee #2
-  Basket #2

Hole #2

-  Tee #1
-  Tee #1

Hole #3

-  Hole #3
-  Basket #3

Hole #4

-  Tee #4
-  Basket #4


Hole #5

-  Hole #5
-  Basket #5

Hole #6

-  Tee #6
-  Basket #6

11/12 Hole #7

-  Tee #7

Caring Concern  
Residential Homes

Imagery ©2022 City of Thousand Oaks, Maxar Technologies, U.S. Geological Survey, USDA/FPAC/GEO

 Basket #7

---

Hole #8

 Hole #8

 Basket #8

---

Hole #9

 Hole #9

 Basket #9