

THESE DRAWINGS, SPECIFICATIONS AND DESIGNS ARE INSTRUMENTS OF PROFESSIONAL SERVICES AND AS SUCH ARE THE PROPERTY OF JORDAN, GILBERT & BAIN LANDSCAPE ARCHITECTS, INC. REPRODUCTION OR OTHER USE NOT AUTHORIZED BY JORDAN, GILBERT & BAIN IS PROHIBITED WITHOUT WRITTEN APPROVAL.

REVISIONS			
NO.	DATE	BY	DESCRIPTION
1			

CLIENT
MIRACLE LEAGUE OF THE 805
 2310 PONDEROSA DRIVE
 SUITE 21
 CAMARILLO, CALIFORNIA 93010

PROJECT:
MIRACLE LEAGUE BASEBALL FIELD
 FREEDOM PARK
 CAMARILLO, CA.

SHEET TITLE:
**SHETLAND BASEBALL
 FIELD LAYOUT**



JORDAN, GILBERT & BAIN
 LANDSCAPE ARCHITECTS, INC.
 459 NORTH VENTURA AVE., VENTURA CA 93001
 (805) 642-3641 FAX (805) 653-7874
 Jordan, Gilbert & Bain Landscape Architects, Inc. © 2016

DRAWN:	J. BAIN
CHECKED:	J. BAIN
PRINTED FOR:	
PLAN CHECK	7-16-20
BID	DATE
CONSTRUCTION DATE	

DRAWING
L-1
 SHEET 1 OF 1
 PROJECT No. 20.16

CONSTRUCTION PROGRAM

A. THE CONTRACTOR SHALL IMPLEMENT A CONSTRUCTION PROGRAM THAT PREVENTS ILLICIT CONSTRUCTION-RELATED DISCHARGES OF POLLUTANTS INTO THE MS4, IMPLEMENTS AND MAINTAINS STRUCTURAL AND NON-STRUCTURAL BMPS TO REDUCE POLLUTANTS IN STORMWATER RUNOFF FROM CONSTRUCTION SITES, REDUCES CONSTRUCTION SITE DISCHARGES OF POLLUTANTS FROM THE MS4 TO THE MEP, AND PREVENTS CONSTRUCTION SITE DISCHARGES FROM THE MS4 FROM CAUSING OR CONTRIBUTING TO A VIOLATION OF WATER QUALITY STANDARDS.

BMP IMPLEMENTATION – CONSTRUCTION SITES LESS THAN ONE ACRE

THE CONTRACTOR SHALL REQUIRE THE IMPLEMENTATION OF AN EFFECTIVE COMBINATION OF EROSION AND SEDIMENT CONTROL BMP'S FROM THE COUNTY OF VENTURA STORMWATER QUALITY MANAGEMENT PROGRAM BEST MANAGEMENT PRACTICES FOR CONSTRUCTION LESS THAN 1 ACRE.

BMPs AT CONSTRUCTION SITES LESS THAN 1 ACRE

EROSION CONTROL FOR BMPs	YES	NO	REASON FOR NO
EC-1 OR SS-1 SCHEDULING	■		
EC-2 OR SS-2 PRESERVATION OF EXISTING VEGETATION	■		
TEMPORARY SEDIMENT CONTROL BMPs			
SE-1 OR SC-1 SILT FENCE	■		
SE-8 OR SC-8 SANDBAG BARRIER	■		
TEMPORARY TRACKING CONTROL BMPs			
TC-1 STABILIZED CONSTRUCTION ENTRANCE/EXIT	■		
NON-STORMWATER MANAGEMENT BMPs			
NS-1 WATER CONSERVATION PRACTICES	■		
NS-2 DEWATERING OPERATIONS	■		NO EXCAVATION EXPECTED
WASTE MANAGEMENT & MATERIALS POLLUTION CONTROL BMPs			
WM-1 MATERIAL DELIVERY & STORAGE	■		
WM-3 STOCKPILE MANAGEMENT	■		
WM-4 SPILL PREVENTION & CONTROL	■		
WM-5 SOLID WASTE MANAGEMENT	■		
WM-8 CONCRETE WASTE MANAGEMENT	■		
WM-9 SANITARY/SEPTIC WASTE MGMT	■		
ADDITIONAL BMPs SELECTED			

PONDED STORM WATER MAY BE DISCHARGED AT A CONCENTRATION OF TOTAL SUSPENDED SOLIDS (TSS) OF 100 MG/L OR LESS

SCOPE OF WORK

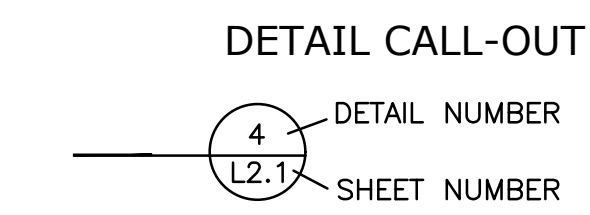
THIS PROJECT INCLUDES THE CONSTRUCTION OF A BASEBALL FIELD INCLUDING:

APPLICABLE CODES & STANDARDS

- PART 1 – 2019 CALIFORNIA BUILDING STANDARD ADMINISTRATIVE CODE. TITLE 24 C.C.R.
 PART 2 – 2019 CALIFORNIA BUILDING CODE – TITLE 24 C.C.R.
 PART 11 – 2019 CALIFORNIA GREEN BUILDING STANDARDS CODE TITLE 24 C.C.R.

CALIFORNIA DEPARTMENT OF WATER RESOURCES
 MODEL WATER EFFICIENT LANDSCAPE ORDINANCE (MWEL0)
 C.C.R., TITLE 23, CHAPTER 2.7, DIVISION 2.

SYMBOLS



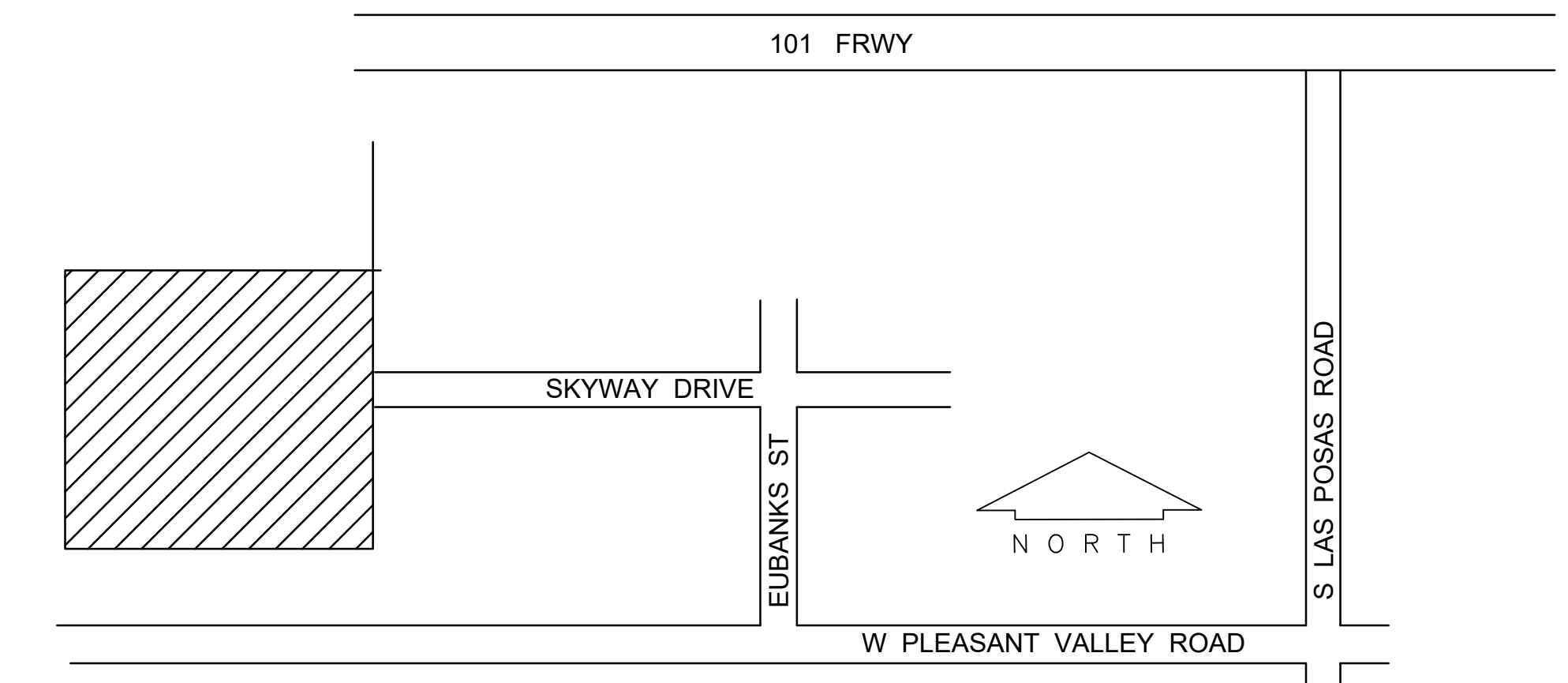
ABBREVIATIONS

CONC.	CONCRETE	P.O.T.	PATH OF TRAVEL
C.A.B.	CRUSHED AGGREGATE BASE	PSI	POUNDS PER SQUARE INCH
CONT.	CONTINUOUS	(N)	NEW
CONC.	CONCRETE	O.C.	ON CENTER
C.O.	CLEAN OUT	STL.	STEEL
C.L.	CHAIN LINK	TC	TOP OF CURB
D.G.	DECOMPOSED GRANITE	TG	TOP OF GRATE
DIA.	DIAMETER		
E.J.	EXPANSION JOINT		
(E)	EXISTING		
FIN.	FINISH		
F.O.C.	FACE OF CURB		
FG	FINISH GRADE		
FS	FINISH SURFACE		
GRD.	GRADE		
INV	INVERT ELEVATION		
IRR	IRRIGATION		
MAX	MAXIMUM		
M.P.R.	MULTI PURPOSE ROOM		
P.A.	PLANTING AREA		

LANDSCAPE CONSTRUCTION PLANS FOR: MIRACLE BASEBALL FIELD AT FREEDOM PARK CAMARILLO, CA 93010

MIRACLE LEAGUE OF THE 805
 2310 PONDEROSA DRIVE, SUITE 21
 CAMARILLO, CA 93010

VICINITY MAP NOT TO SCALE

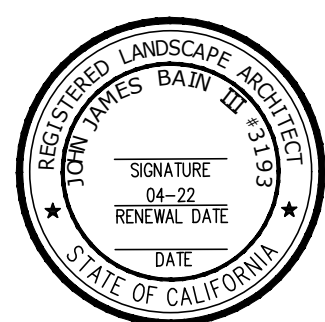


SHEET INDEX

SHEET #	DRAWING #	DESCRIPTION
1	L1.1	COVER SHEET
2	L2.1	DRAINAGE PLAN
3	L3.1	STAKING PLAN
4	L3.2	CONSTRUCTION DETAILS
5	L4.1	IRRIGATION PLAN
6	L4.2	IRRIGATION LEGEND, NOTES, & DETAILS
7	L5.1	PLANTING PLAN, & DETAILS
8	L6.1	SPECIFICATIONS



THESE DRAWINGS, SPECIFICATIONS AND DESIGNS ARE INSTRUMENTS OF PROFESSIONAL SERVICES AND AS SUCH ARE THE PROPERTY OF JORDAN, GILBERT & BAIN LANDSCAPE ARCHITECTS, INC. REPRODUCTION OR OTHER USE NOT AUTHORIZED BY JORDAN, GILBERT & BAIN IS PROHIBITED WITHOUT WRITTEN APPROVAL.



REVISIONS			
NO.	DATE	BY	DESCRIPTION

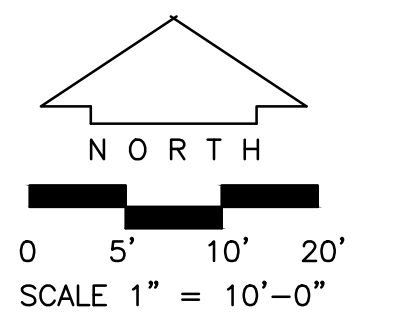
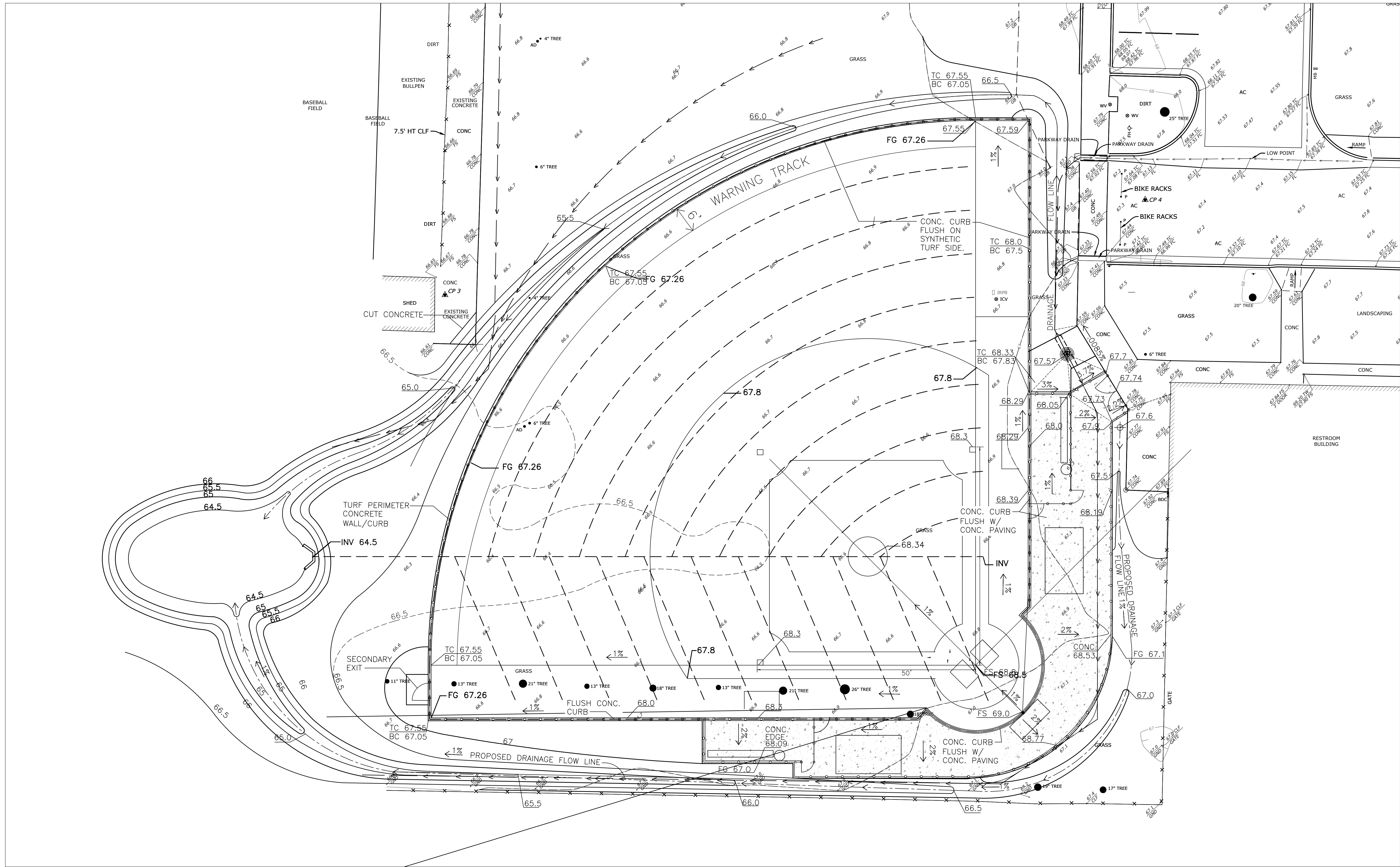
CLIENT
MIRACLE LEAGUE OF THE 805
 2310 PONDEROSA DRIVE
 SUITE 21
 CAMARILLO, CALIFORNIA 93010

PROJECT:
MIRACLE LEAGUE BASEBALL FIELD
 FREEDOM PARK
 CAMARILLO, CA.

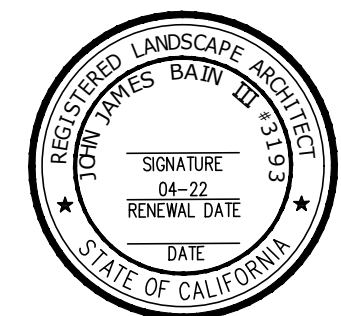
SHEET TITLE:
COVER SHEET

JORDAN, GILBERT & BAIN
 LANDSCAPE ARCHITECTS, INC.
 459 NORTH VENTURA AVE., VENTURA CA 93001
 (805) 642-3641 FAX (805) 653-7874
 Jordan, Gilbert & Bain Landscape Architects, Inc. © 2018

DRAWN: _____	DRAWING
CHECKED: _____	L1.1
PRINTED FOR: _____	SHEET 1 OF 8
BID: _____ DATE _____	PROJECT No. 20.16
CONSTRUCTION DATE _____	



THESE DRAWINGS, SPECIFICATIONS AND DESIGNS ARE INSTRUMENTS OF PROFESSIONAL SERVICES AND AS SUCH ARE THE PROPERTY OF JORDAN, GILBERT & BAIN LANDSCAPE ARCHITECTS, INC. REPRODUCTION OR OTHER USE NOT AUTHORIZED BY JORDAN, GILBERT & BAIN WITHOUT WRITTEN APPROVAL.



REVISIONS			
NO.	DATE	BY	DESCRIPTION

CLIENT
MIRACLE LEAGUE OF THE 805
 2310 PONDEROSA DRIVE
 SUITE 21
 CAMARILLO, CALIFORNIA 93010

PROJECT:
MIRACLE LEAGUE BASEBALL FIELD
 FREEDOM PARK
 CAMARILLO, CA.

SHEET TITLE:
DRAINAGE PLAN

JORDAN, GILBERT & BAIN
 LANDSCAPE ARCHITECTS, INC.
 459 NORTH VENTURA AVE., VENTURA CA 93001
 (805) 642-3641 FAX (805) 653-7874
 Jordan, Gilbert & Bain Landscape Architects, Inc. © 2018

DRAWN: PJ
 CHECKED:
 PRINTED FOR:
 BID DATE
 CONSTRUCTION DATE

DRAWING
L2.1
 SHEET 2 OF 8
 PROJECT No. 20.16

