



# LOKKER PARK

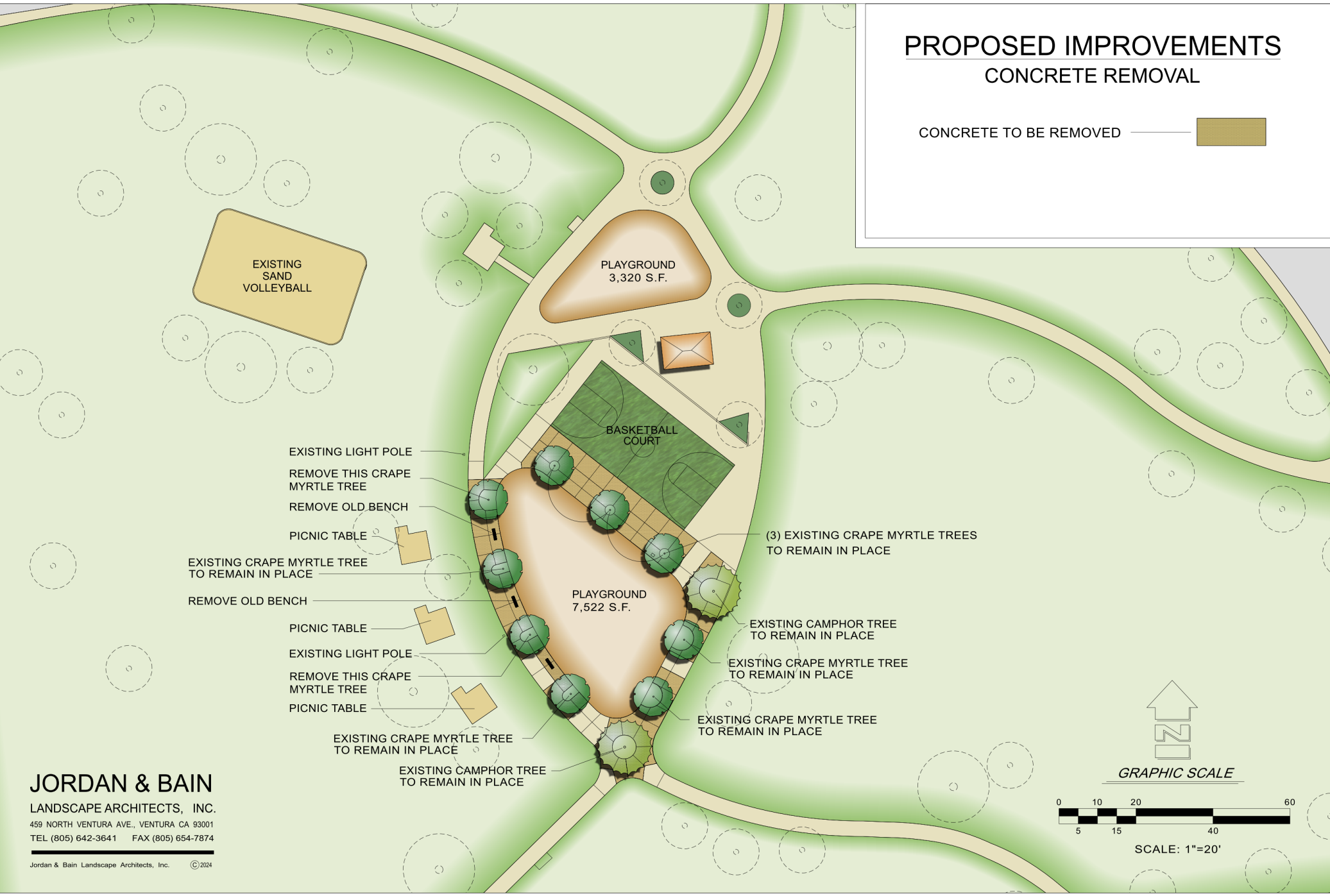
848 Vista Coto Verde  
Camarillo, CA



**Jordan & Bain**  
Landscape Architects, Inc.  
459 North Ventura Avenue  
Ventura, CA 93001

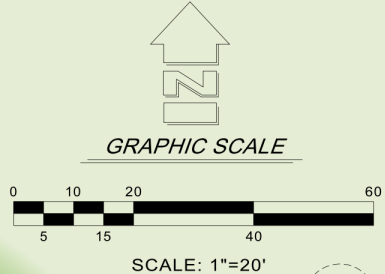
# PROPOSED IMPROVEMENTS CONCRETE REMOVAL

CONCRETE TO BE REMOVED 



**JORDAN & BAIN**  
 LANDSCAPE ARCHITECTS, INC.  
 459 NORTH VENTURA AVE., VENTURA CA 93001  
 TEL (805) 642-3641 FAX (805) 654-7874

Jordan & Bain Landscape Architects, Inc. © 2024



# PROPOSED IMPROVEMENTS

## PAVING, PLANTERS & PLAY EQUIP.

NEW CONCRETE PAVING



PLANTER AREA W/ MULCH



PLAY AREA SURFACE  
(TO BE SELECTED)



EXISTING SAND VOLLEYBALL

CURVED BALANCE BEAM  
RESILIENT SURFACE FIBER

ANT HILL

PLAYGROUND SPHERES

SMALL BOULDERS

SAND

SMALL TREE

SIGN

BENCH

SIGN

BASKETBALL COURT

PLAYGROUND  
7,522 S.F.

(3) EXISTING CRAPE MYRTLE TREES  
TO REMAIN IN PLACE

EXISTING CAMPHOR TREE  
TO REMAIN IN PLACE

EXISTING LIGHT POLE  
EXISTING CRAPE MYRTLE TREE  
TO REMAIN IN PLACE

PICNIC TABLE

PICNIC TABLE

EXISTING LIGHT POLE

PICNIC TABLE

EXISTING CRAPE MYRTLE TREE  
TO REMAIN IN PLACE

EXISTING CAMPHOR TREE  
TO REMAIN IN PLACE

EXISTING CRAPE MYRTLE TREE  
TO REMAIN IN PLACE

EXISTING CRAPE MYRTLE TREE  
TO REMAIN IN PLACE



GRAPHIC SCALE






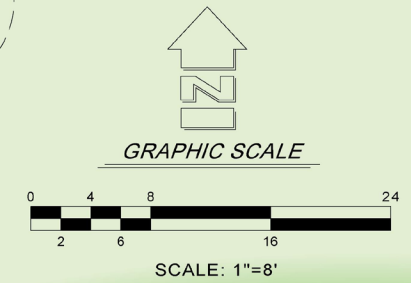
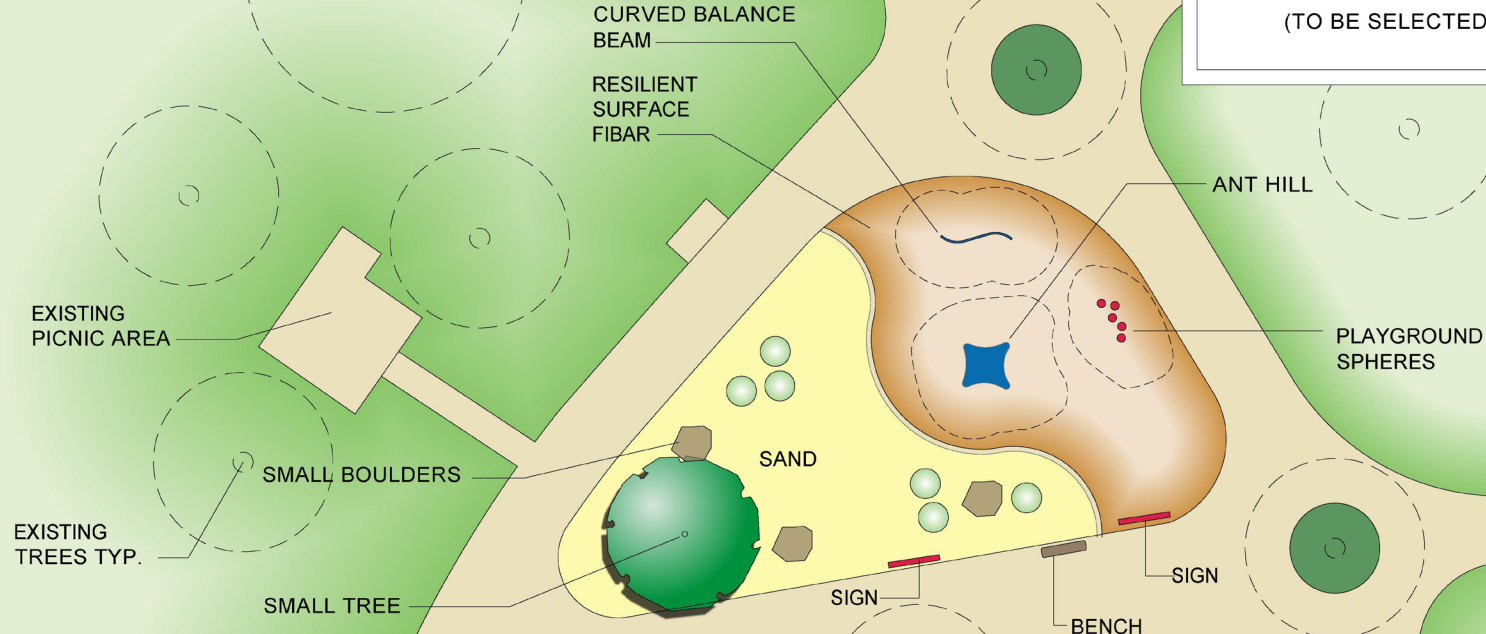
SCALE: 1"=20'

## JORDAN & BAIN

LANDSCAPE ARCHITECTS, INC.  
459 NORTH VENTURA AVE., VENTURA CA 93001  
TEL (805) 642-3641 FAX (805) 654-7874

# PROPOSED IMPROVEMENTS TODDLER PLAY AND SAND NATURE AREA

- NEW CONCRETE PAVING 
- SAND AREA 
- PLAY AREA SURFACE (TO BE SELECTED) 



## JORDAN & BAIN

LANDSCAPE ARCHITECTS, INC.  
459 NORTH VENTURA AVE., VENTURA CA 93001  
TEL (805) 642-3641 FAX (805) 654-7874





A PLAYCORE company

1-800-235-2440

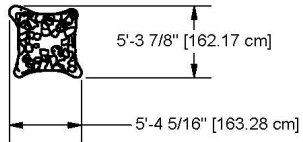
ISSUED/REVISED: 11/19/15

# 38100 ANT HILL

-  = INSTALLATION DETAIL
-  = PARTS LIST REFERENCE



**ASSEMBLY VIEW**



**TOP VIEW**

## SPECIFICATIONS

**Fiberglass Reinforced Cement (GFRC):** A cement/aggregate slurry reinforced throughout with chopped glass fibers. Cement used shall be Type 1 Portland cement meeting the requirement of the ASTM C 150. Sand shall be washed silica sand passing a U.S. No. 20 sieve, and conforming to ASTM C 144. Glass Fibers shall be alkali-resistant (AR) fiber specifically designed for use in concrete and chopped to 1" - 2" lengths. Thickness of the cast panels shall be a minimum of 5/8" ranging to 1 1/2" depending on the face configuration. Embossing Mortar and

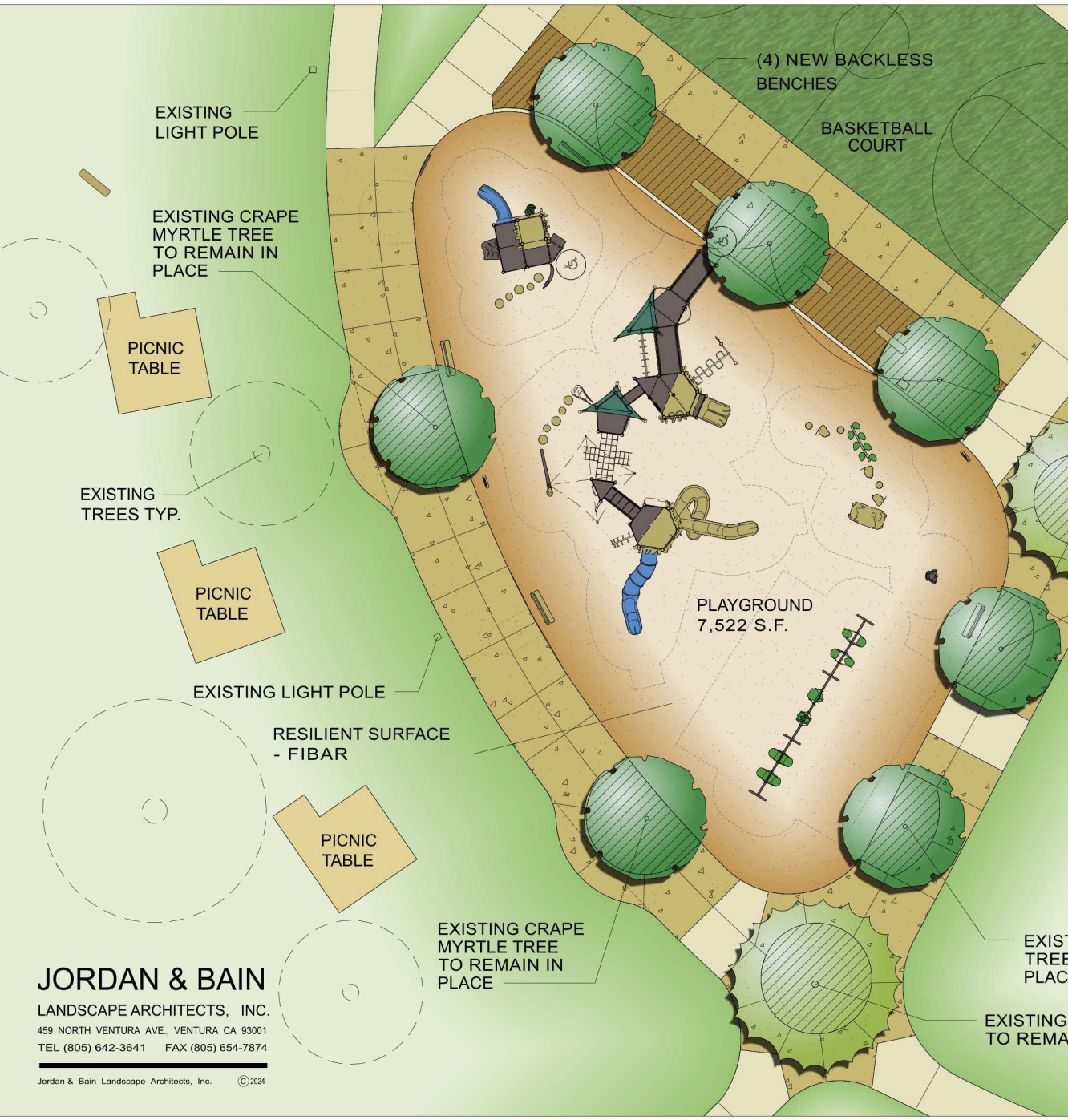
**Cement Plaster:** Site mixed cement/aggregate meeting the same criteria as 2.01 A, but omitting the glass fibers; for filling the irregular voids between mold-cast panels and/or special themed features. Backup Material: Shall be galvanized steel "diamond lath", tied in place with annealed steel wire and reinforced with #3 or #4 steel reinforcing rods. Minimum physical properties shall be: 1500 pounds per square inch in tension and 5000 pounds per square inch in compression.



# PROPOSED IMPROVEMENTS

## 2-5 & 5-12 YR OLD PLAY AREA

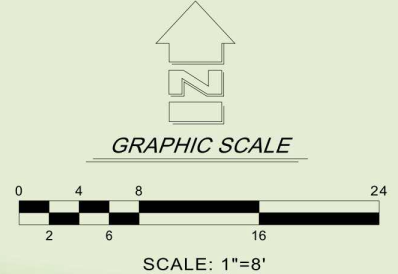
- NEW CONCRETE PAVING 
- PLANTER AREA W/ MULCH 
- PLAY AREA SURFACE (TO BE SELECTED) 



- (3) EXISTING CRAPE MYRTLE TREES TO REMAIN IN PLACE
- EXISTING CAMPHOR TREE TO REMAIN IN PLACE
- EXISTING CRAPE MYRTLE TREE TO REMAIN IN PLACE

**JORDAN & BAIN**  
 LANDSCAPE ARCHITECTS, INC.  
 459 NORTH VENTURA AVE., VENTURA CA 93001  
 TEL (805) 642-3641 FAX (805) 654-7874

Jordan & Bain Landscape Architects, Inc. © 2024











The Recumbent Cycle utilizes magnetic resistance bearings to provide a smooth gliding cycling resistance while pedaling the stationary bike.



### Features & Benefits

- Fitness Focus: Aerobic Fitness
- Other Fitness Elements: Muscular Fitness
- Magnetic Resistance

The Sit-Up/Back Extension is a dual ab exercise machine. The Sit-Up bench has perforations for air flow providing comfort and quick drainage after rain.



### Features & Benefits

- Fitness Focus: Core Fitness
- Other Fitness Elements: Balance and Flexibility, Muscular Fitness

The Balance Board packs a punch in a small space. The spring base offers an added challenge as muscles work to react to completing familiar exercises in a new context. The board wobbles and flexes as the user attempts standing squats, single leg lifts, or even push ups. The convenient handles routed into the surface provide comfortable grips for arm exercises like push ups and dips. This truly is a full body gym in a small package. Designed to emulate the benefits of a stability fitness ball.



### Features & Benefits

- Fitness Focus: Balance and Flexibility
- Other Fitness Elements: Core Fitness, Muscular Fitness

The Dual ADA Chest Press builds Muscle Strength and Endurance. Users can remain comfortably seated in their wheelchair or take a seat on the comfort seat which provides added support and molded-in hand grips



### Features & Benefits

- Fitness Focus: Muscular Fitness
- Other Fitness Elements: Core Fitness

# **COST OF DEMOLITION**

## **Demolition of Concrete:**

<b>5,137 sq. ft. @ \$5.00/sf</b>	<b>\$</b>	<b>25,685.00</b>
<b>Removal of Excess Sand</b>		
<b>9,182 sq. ft. @ \$3.25/sf</b>	<b>\$</b>	<b>29,842.00</b>
<b>Root Pruning</b>	<b>\$</b>	<b>14,500.00</b>
<b>Tree Removal (2)</b>	<b>\$</b>	<b>3,000.00</b>
<b>Dump Fees – Old Equipment</b>	<b>\$</b>	<b>4,000.00</b>
<b>Remove Excess Sod &amp; Repair Damage</b>	<b>\$</b>	<b>5,500.00</b>
<b>Total Estimate for Demolition</b>	<b>\$</b>	<b>82,527.00</b>

# COST OF NEW IMPROVEMENTS

## New Concrete:

5,137 sq. ft. @ \$13.00/sf	\$	66,781.00
Concrete Mow Strip		
65 In. ft. @ \$30.00/lf	\$	1,950.00
Fibar Surfacing	\$	25,000.00
Fibar Installation	\$	20,000.00
Benches – 8 ea @ \$1,700 ea	\$	13,600.00
New Play Equipment & Installation	\$	500,000.00 *
PVRPD Expenses to install 'Natural Landscape'	\$	<u>20,000.00</u>
<b>Total Estimate for New Improvements</b>	<b>\$</b>	<b>647,331.00</b>

\* PVRPD Special Purchase Price – Retail Cost is \$550,000

# TOTAL COST

<b>Demolition</b>	<b>\$ 82,527.00</b>
<b>New Improvements</b>	<b><u>\$ 647,331.00</u></b>
<b>Subtotal</b>	<b>\$ 729,858.00</b>
<b>10% Contingency</b>	<b><u>\$ 72,985.80</u></b>
<b>Grand Total</b>	<b>\$ 802,843.80</b>