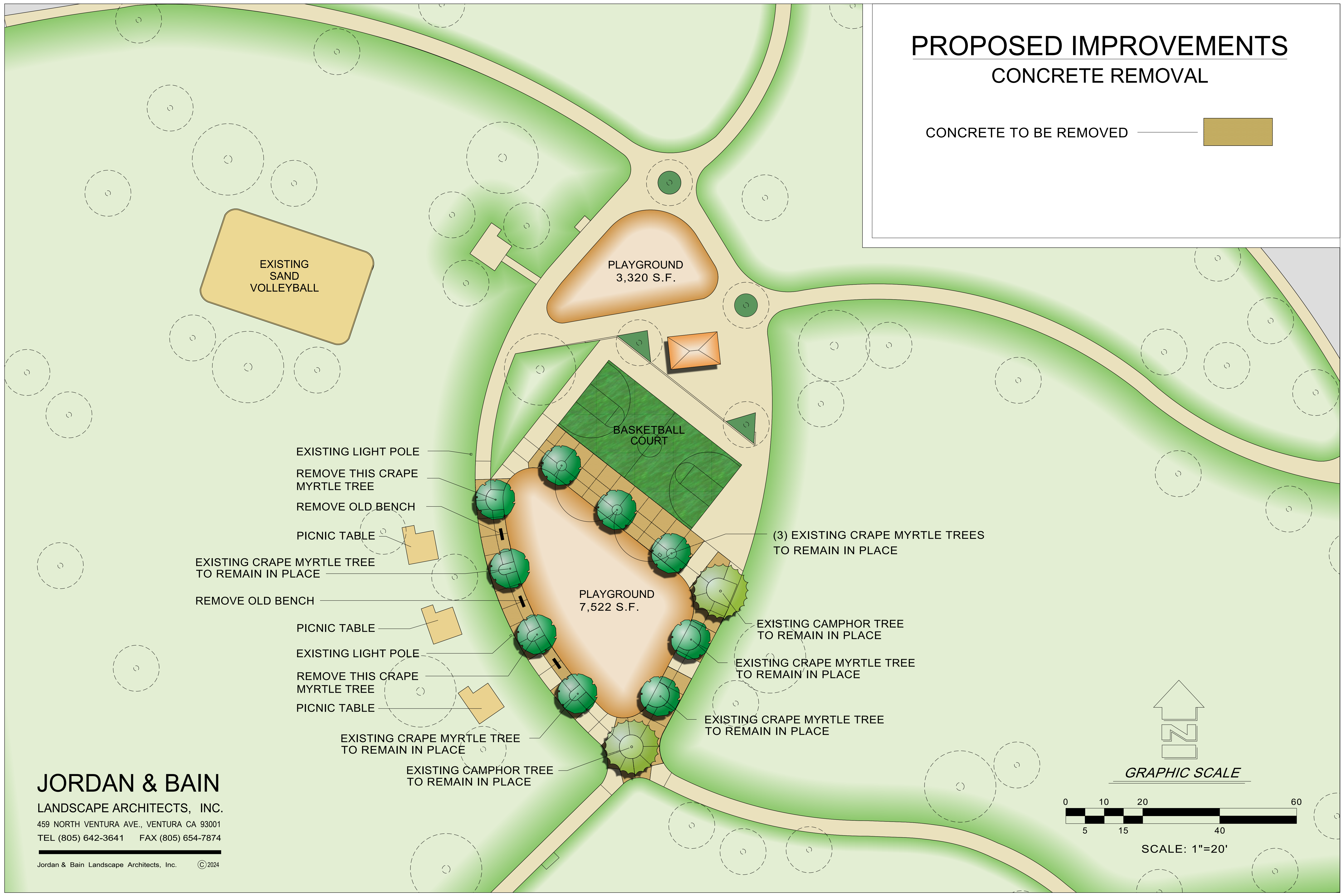


PROPOSED IMPROVEMENTS

CONCRETE REMOVAL

CONCRETE TO BE REMOVED 



EXISTING SAND VOLLEYBALL

PLAYGROUND 3,320 S.F.

BASKETBALL COURT

PLAYGROUND 7,522 S.F.

EXISTING LIGHT POLE

REMOVE THIS CRAPE MYRTLE TREE

REMOVE OLD BENCH

PICNIC TABLE

EXISTING CRAPE MYRTLE TREE TO REMAIN IN PLACE

REMOVE OLD BENCH

PICNIC TABLE

EXISTING LIGHT POLE

REMOVE THIS CRAPE MYRTLE TREE

PICNIC TABLE

EXISTING CRAPE MYRTLE TREE TO REMAIN IN PLACE

EXISTING CAMPHOR TREE TO REMAIN IN PLACE

(3) EXISTING CRAPE MYRTLE TREES TO REMAIN IN PLACE

EXISTING CAMPHOR TREE TO REMAIN IN PLACE

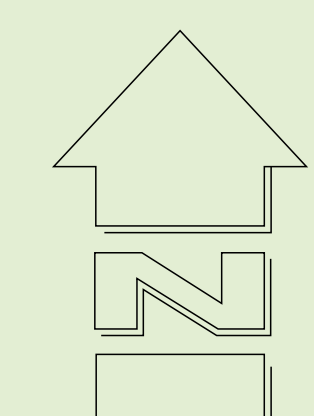
EXISTING CRAPE MYRTLE TREE TO REMAIN IN PLACE

EXISTING CRAPE MYRTLE TREE TO REMAIN IN PLACE

JORDAN & BAIN

LANDSCAPE ARCHITECTS, INC.
 459 NORTH VENTURA AVE., VENTURA CA 93001
 TEL (805) 642-3641 FAX (805) 654-7874

Jordan & Bain Landscape Architects, Inc. ©2024



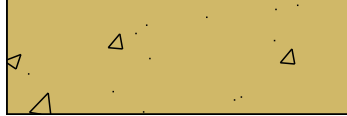

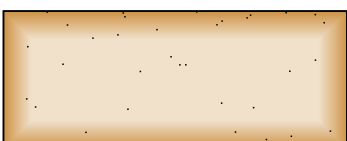
GRAPHIC SCALE

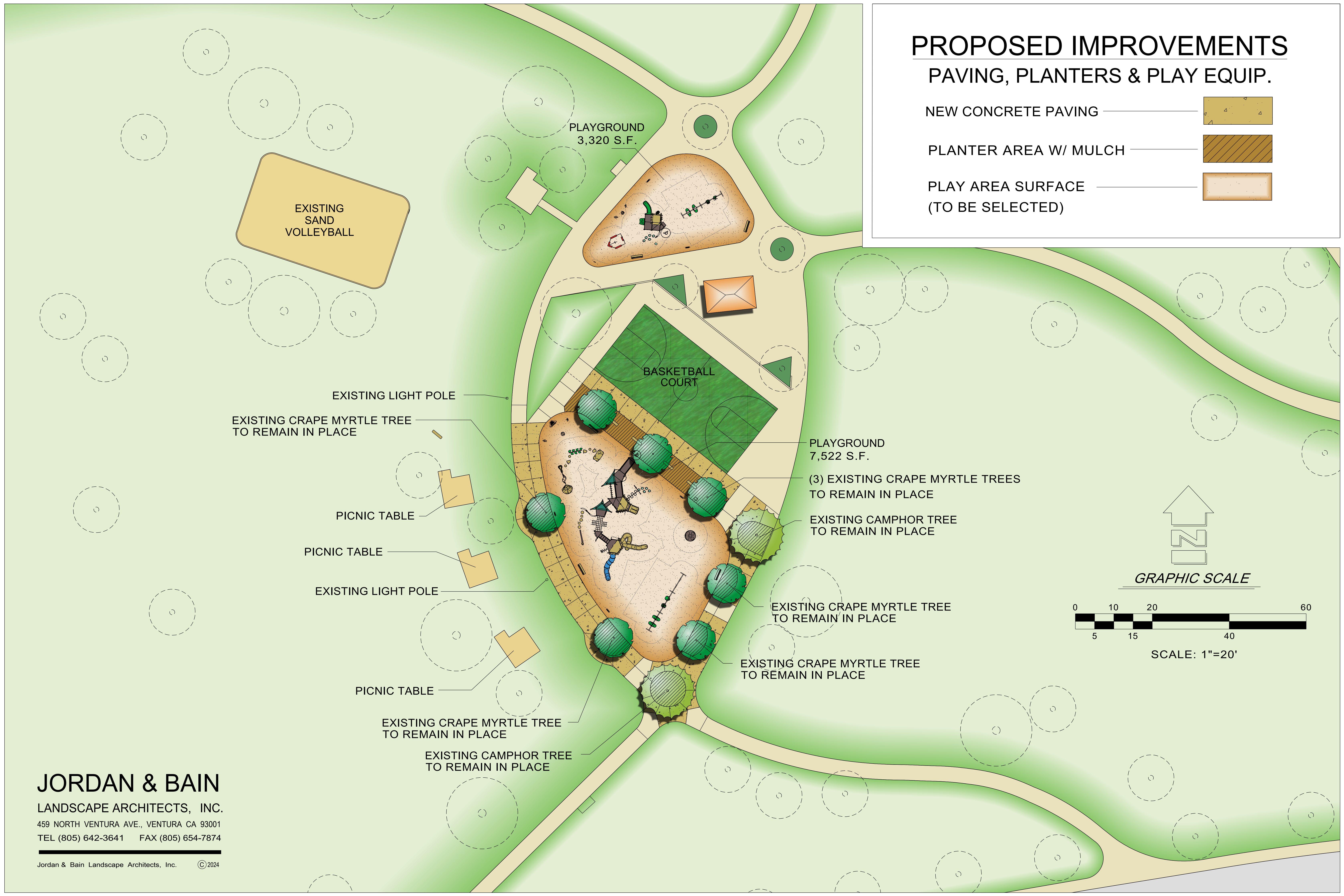


SCALE: 1"=20'

PROPOSED IMPROVEMENTS

PAVING, PLANTERS & PLAY EQUIP.

- NEW CONCRETE PAVING 
- PLANTER AREA W/ MULCH 
- PLAY AREA SURFACE (TO BE SELECTED) 



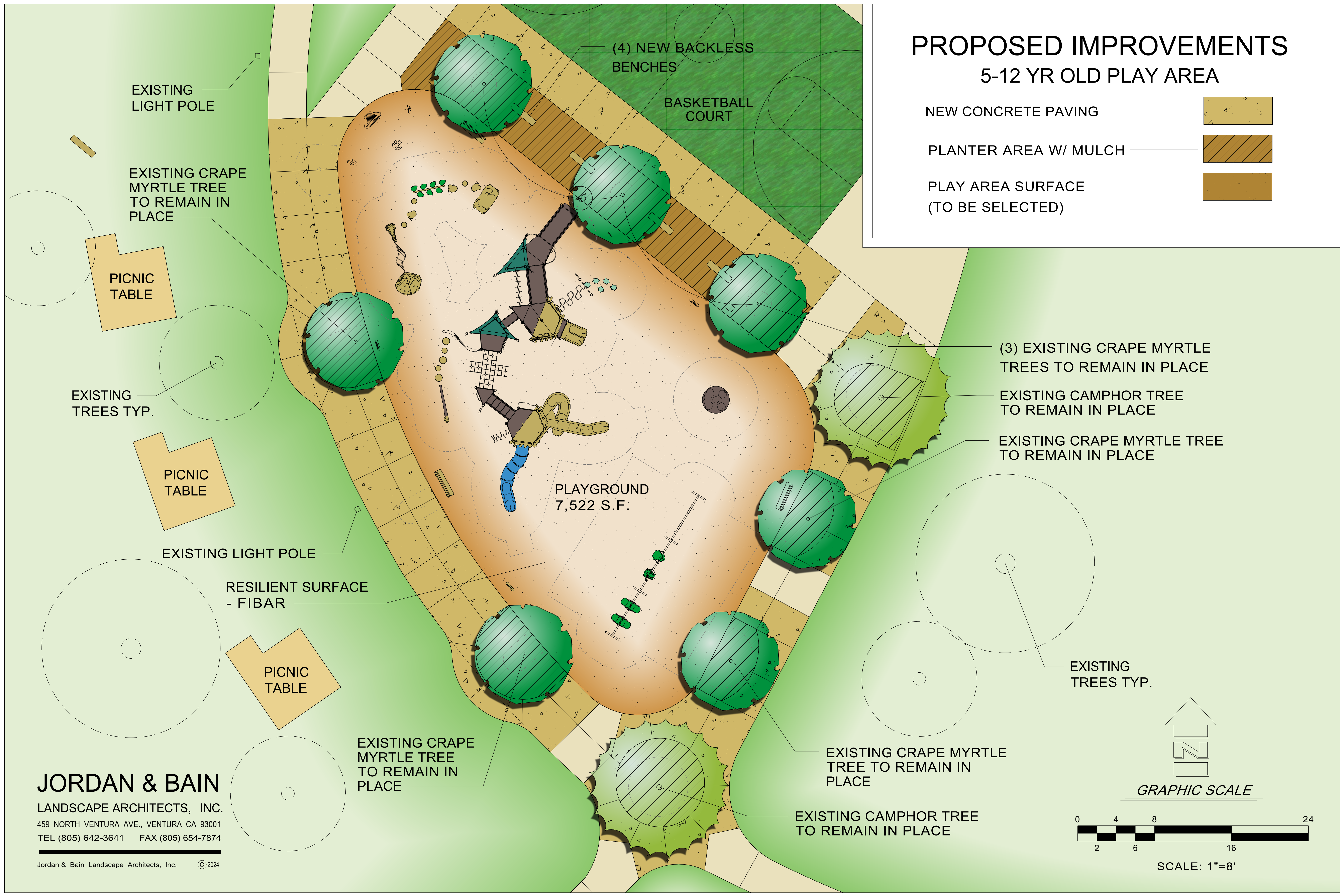
JORDAN & BAIN

LANDSCAPE ARCHITECTS, INC.
 459 NORTH VENTURA AVE., VENTURA CA 93001
 TEL (805) 642-3641 FAX (805) 654-7874

PROPOSED IMPROVEMENTS

5-12 YR OLD PLAY AREA

- NEW CONCRETE PAVING
- PLANTER AREA W/ MULCH
- PLAY AREA SURFACE (TO BE SELECTED)



(4) NEW BACKLESS BENCHES

BASKETBALL COURT

EXISTING LIGHT POLE

EXISTING CRAPE MYRTLE TREE TO REMAIN IN PLACE

PICNIC TABLE

EXISTING TREES TYP.

PICNIC TABLE

EXISTING LIGHT POLE

RESILIENT SURFACE - FIBAR

PICNIC TABLE

EXISTING CRAPE MYRTLE TREE TO REMAIN IN PLACE

PLAYGROUND
7,522 S.F.

(3) EXISTING CRAPE MYRTLE TREES TO REMAIN IN PLACE

EXISTING CAMPHOR TREE TO REMAIN IN PLACE

EXISTING CRAPE MYRTLE TREE TO REMAIN IN PLACE

EXISTING TREES TYP.

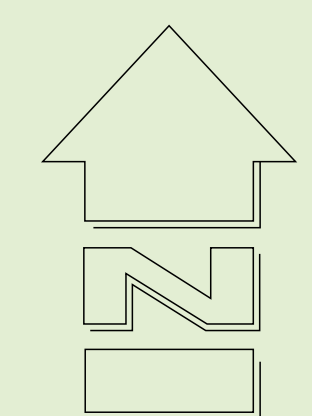
EXISTING CRAPE MYRTLE TREE TO REMAIN IN PLACE

EXISTING CAMPHOR TREE TO REMAIN IN PLACE

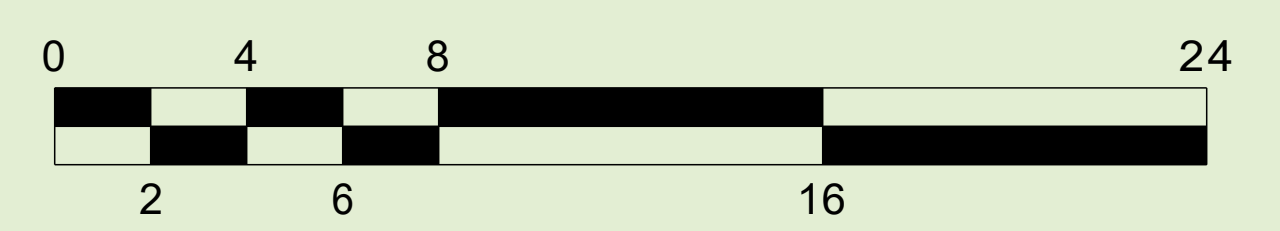
JORDAN & BAIN

LANDSCAPE ARCHITECTS, INC.
459 NORTH VENTURA AVE., VENTURA CA 93001
TEL (805) 642-3641 FAX (805) 654-7874

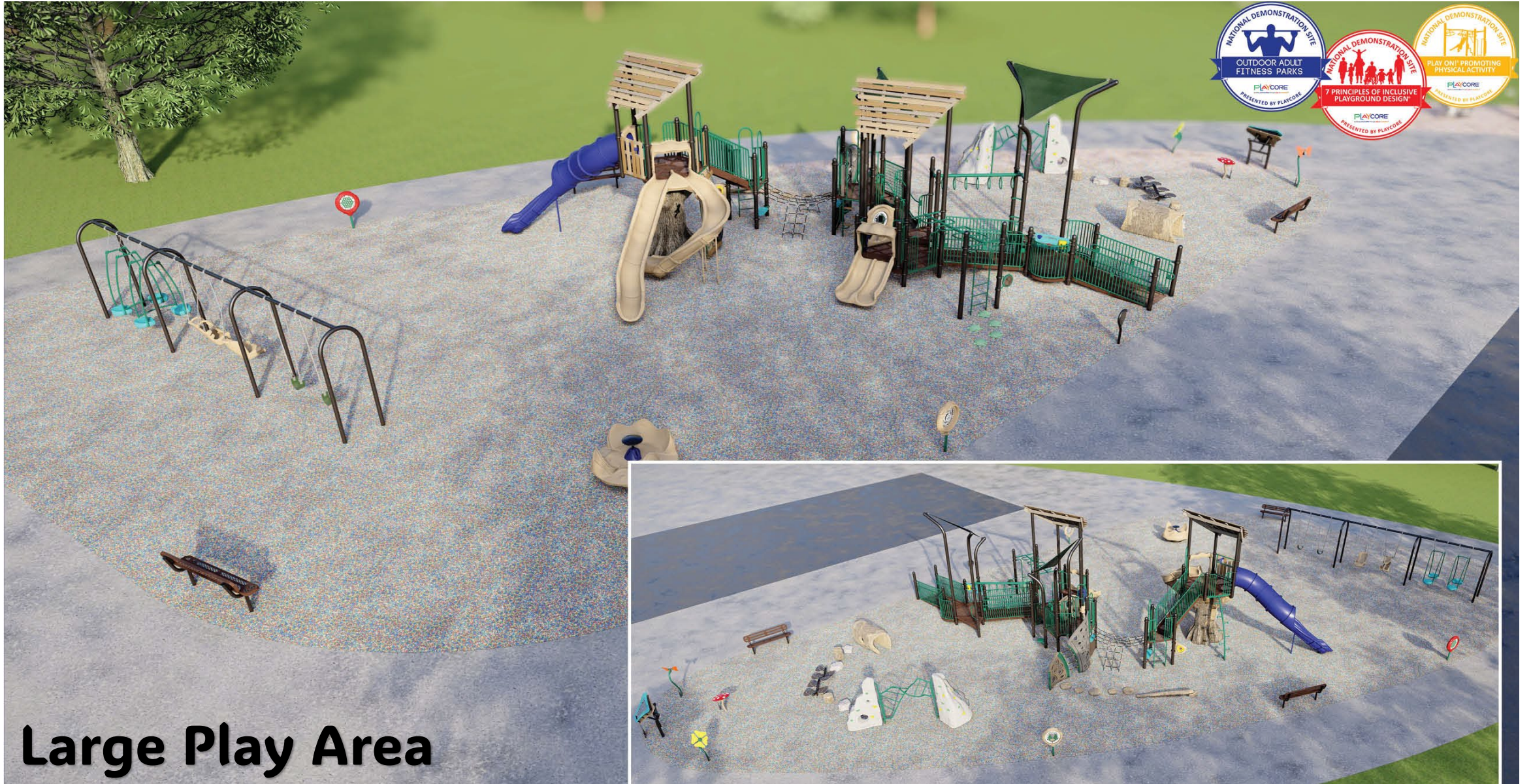
Jordan & Bain Landscape Architects, Inc. ©2024



GRAPHIC SCALE

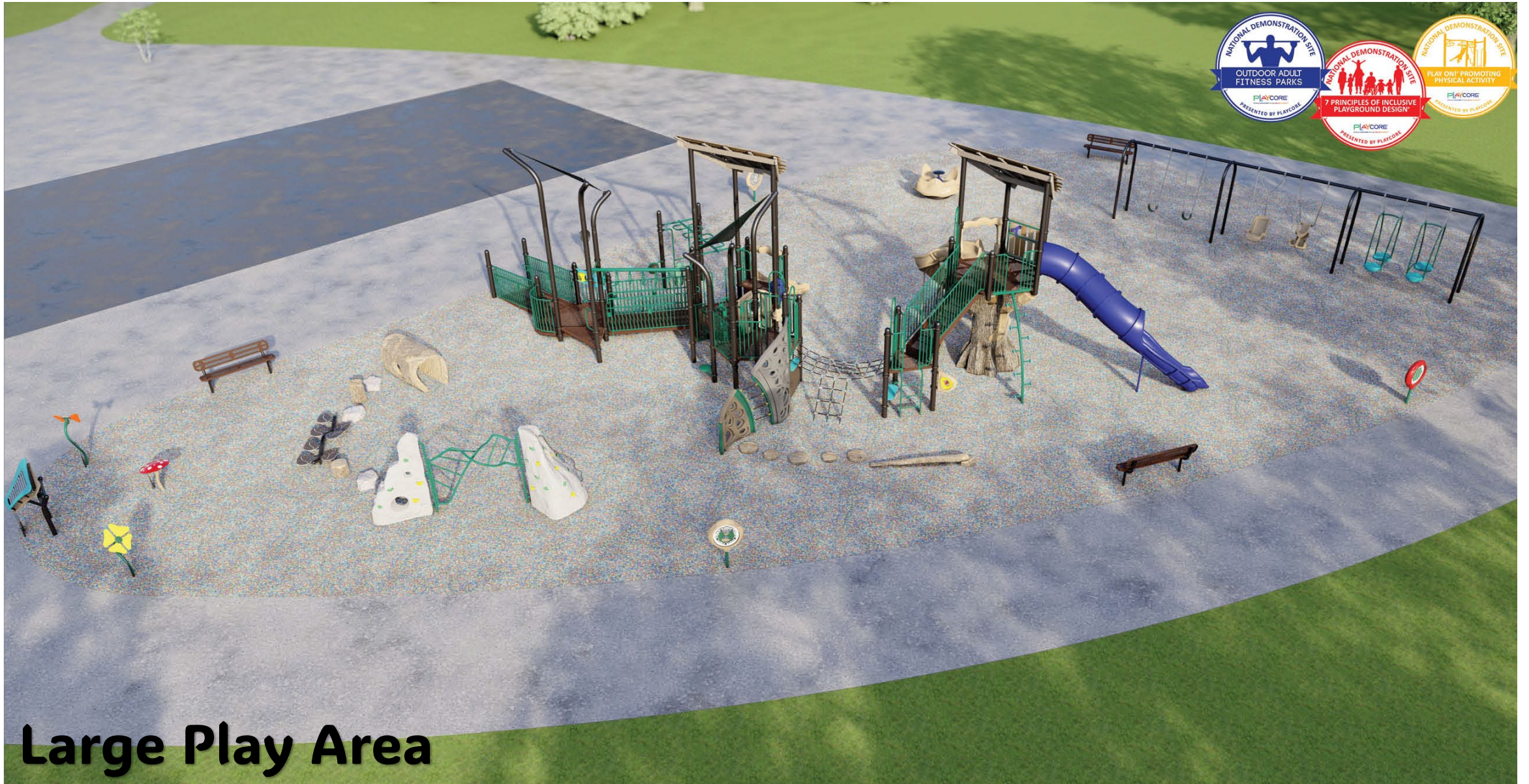


SCALE: 1"=8'



Large Play Area





Large Play Area

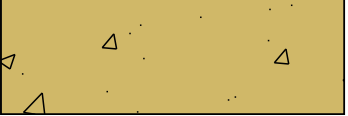

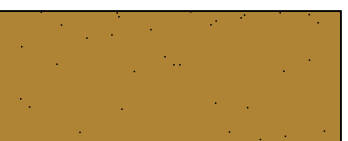


Large Play Area



PROPOSED IMPROVEMENTS

2 - 5 YR OLD PLAY AREA

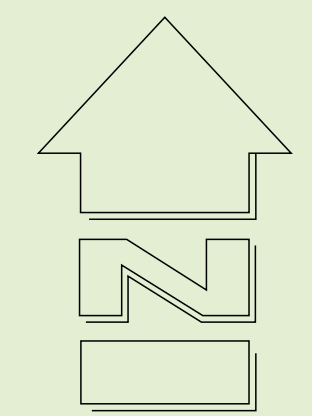
- NEW CONCRETE PAVING 
- PLANTER AREA W/ MULCH 
- PLAY AREA SURFACE (TO BE SELECTED) 

RESILIENT SURFACE FIBAR

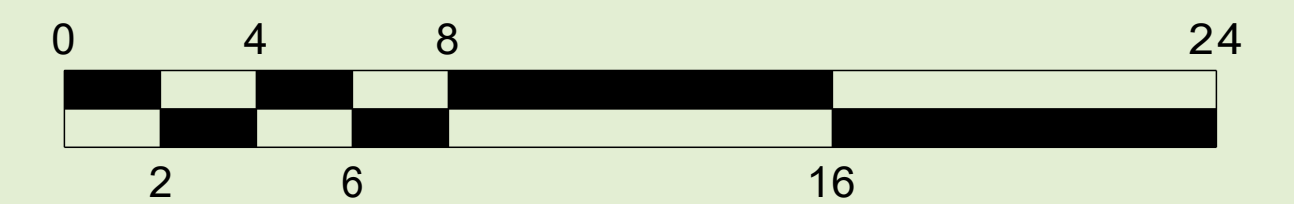
PLAYGROUND
3,320 S.F.

EXISTING PICNIC AREA

EXISTING TREES TYP.



GRAPHIC SCALE



SCALE: 1"=8'

JORDAN & BAIN

LANDSCAPE ARCHITECTS, INC.
459 NORTH VENTURA AVE., VENTURA CA 93001
TEL (805) 642-3641 FAX (805) 654-7874



Small Play Area



Small Play Area



Small Play Area

Fitness Equipment

