

Pleasant Valley Recreation & Park District



Mary Otten
General Manager

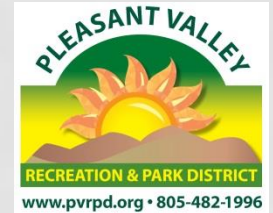
PVRPD AD Hoc
February 24, 2021

Goal



- Provide Overall Information and present short/mid-term/long term proposals to the Ad Hoc Committee
 - Background/History
 - Survey Information
 - Potential short/mid-term/long term proposals

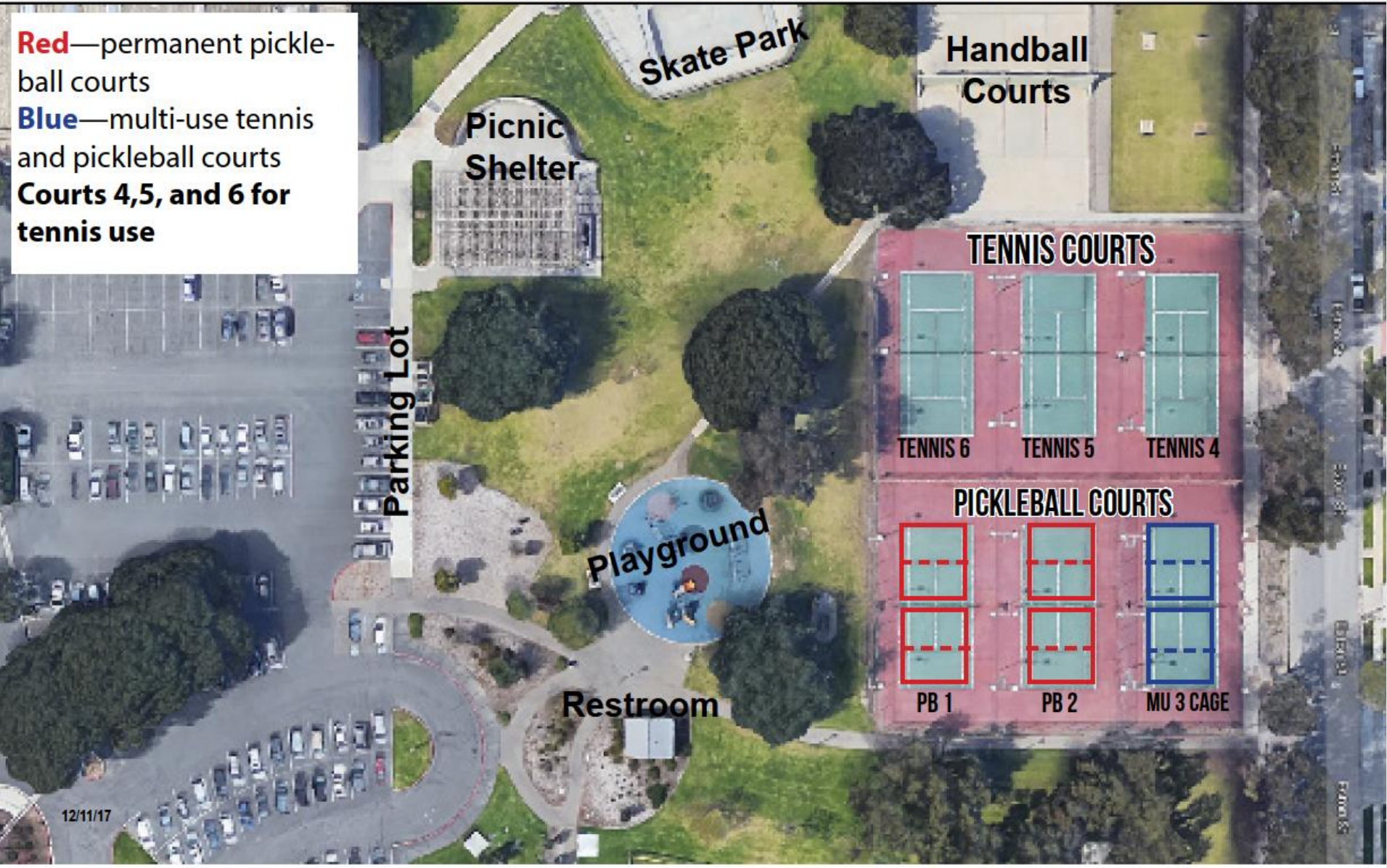
Background



- PVRPD launched pickleball in 2016 at Freedom Gym
- Early 2017 District painted blended lines on 2 courts at Bob Kildee.
- January 2018- District Board approved project to convert 2 tennis courts into 4 pickleball courts at Kildee Park

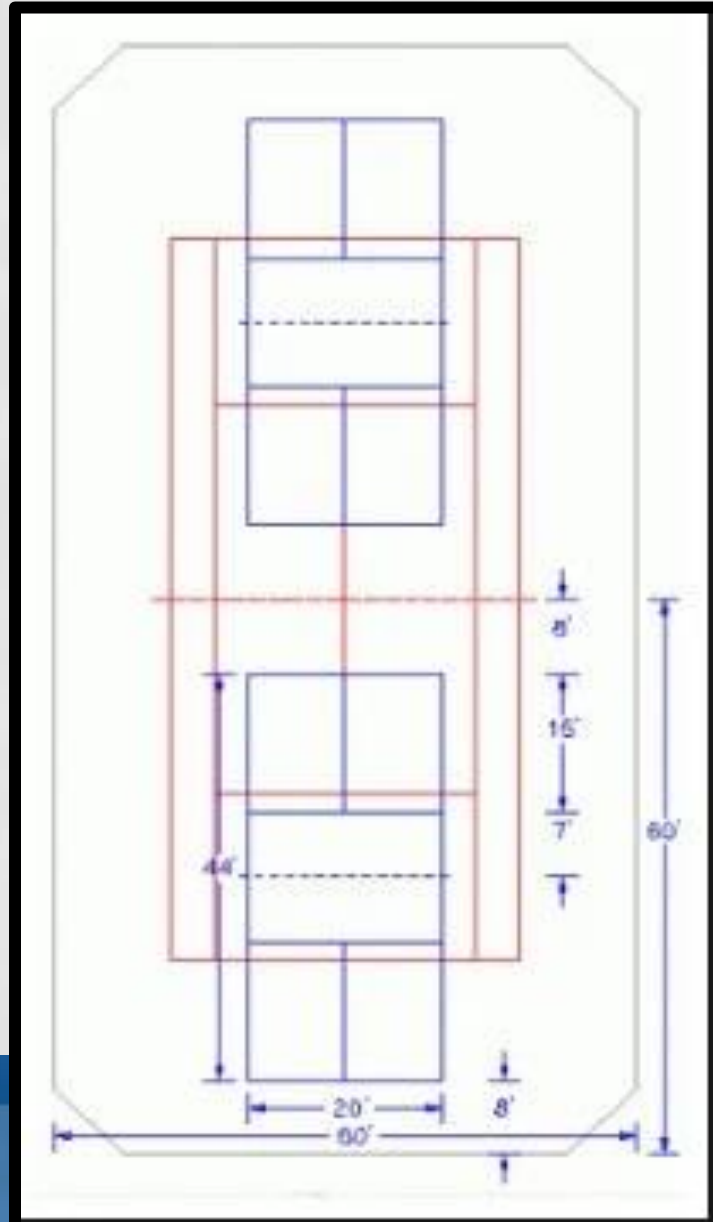
Bob Kildee Park: potential tennis court conversion to pickleball court(s)

Red—permanent pickleball courts
Blue—multi-use tennis and pickleball courts
Courts 4,5, and 6 for tennis use



2 Court Configuration

One tennis court (red lines) with two pickleball courts (blue lines)



Background



- Current Tennis Courts
 - Mission Oaks Park - 6 tennis*
 - Pitts Ranch Park - 2 tennis
 - Bob Kildee Park - 3 tennis*
 - 1 Court mixed use
 - Springville Park - 3 tennis*
 - Valle Lindo Park - 5 tennis*

Total = 19 Dedicated Courts / 1 Mixed Use Court*

*Lighted courts

Survey Information



- 98% of respondents live in PVRPD boundaries
- 50% play Pickleball /42% Tennis / 10% play both
- Highest 3 use locations: Bob Kildee / Mission Oaks/ Valle Lindo
- Highest Use times:
 - M-F: **7** am – **11** am & **4** pm – **7** pm
 - Sat: **7** am – **11** am

Survey Information



- Additional Comments:
 - More pickleball courts needed
 - Don't take away tennis courts
 - Pickleball complex would be ideal
 - Noise level concern as it relates to pickleball

Options and Timelines



- Facility & Programmatic Options:

<i>Term Options</i>	
Short Term Option(s):	1 – 3 Months
Mid-Term Option(s):	6 months – 1 Year
Long-Term Option(s):	1 Year +

Analysis



- Location Options
 - Challenges
 - Opportunities
- Programmatic Options
 - Challenges
 - Opportunities

Pitts Ranch Park



- Short-Term Options:
 - Make 1 Court Dual Use
 - Purchase (2) portable nets
 - Est. Total Cost = \$4,700
- Mid-Term Options:
 - Resurface Courts
 - Paint 1 tennis & 2 Pickleball Courts
 - Est. Total Cost = \$35,000



Pitts Ranch Park



- Programmatic Changes
 - Pickleball hours 8 am – Dusk
 - Tennis players are encouraged to use the tennis court prior to using multi-use courts (tennis/pickleball) when vacant.

*Current Court Hours – 7am - Dusk

Analysis - Pitts Ranch Park



- Challenges
 - Noise level/Close to homes
 - High use park
 - Permanent Courts would take 1 tennis court out of circulation
- Opportunities
 - Add 2 potential pickleball courts/dual use courts
 - Open play first come first serve
 - Adjust play time for pickleball due to noise

Springville Park



- Short-Term Options:
 - Make 1 Court Dual Use
 - Purchase (2) portable nets
 - Est. Total Cost = \$4,700
- Mid/Long -Term Options:
 - Convert Sand area into 1 dedicated pickleball court
 - Est. Total Cost = \$135,000



Springville Park



- Programmatic Changes
 - Peak Pickleball hours 5pm – 9pm on Court 3
 - First come, first serve unless reserved
 - District Ordinance 8 & General Use Policy
 - Tennis players are encouraged to use the tennis courts prior to using multi-use courts (tennis/pickleball) when vacant.

Analysis – Springville Park

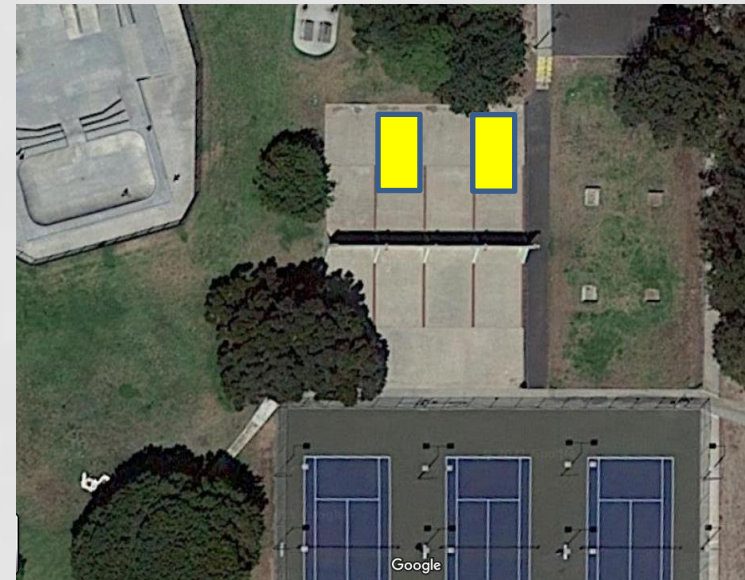


- Challenges
 - Multi-use court
 - Limit tennis on court 3 during peak evening play hours
 - Increase parking demand
- Opportunities
 - Add 2 potential pickleball courts with lights
 - Not close to homes so no time adjustment for play
 - Parking available

Bob Kildee Park



- Short-Term Options:
 - Make handball courts dual use
 - Resurface & Paint courts
 - Est. Total Cost = \$8,000



**Players bring their own net*

Bob Kildee Park



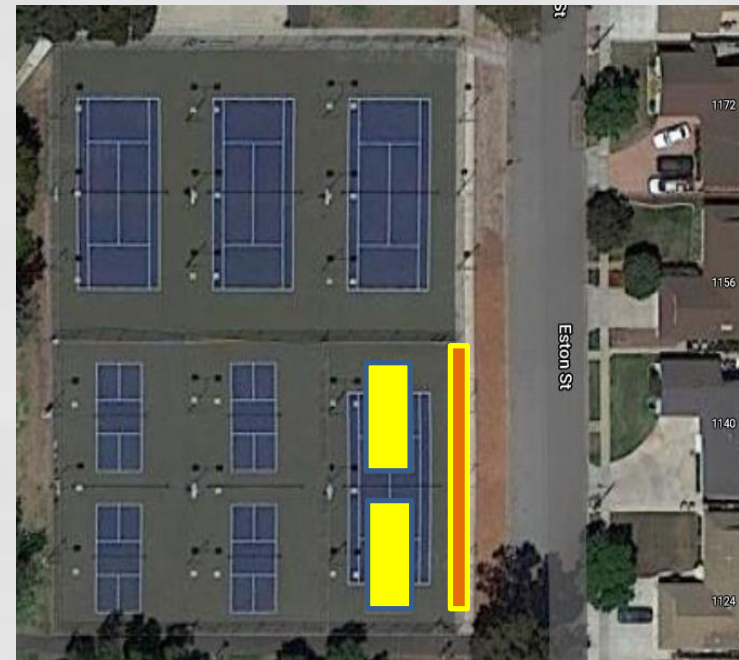
- Mid-Term Options:
 - Convert Multi-Use Court to dedicated Pickleball
 - Repaint Court & add gate
 - Est. Total Cost = \$25,000



Bob Kildee Park



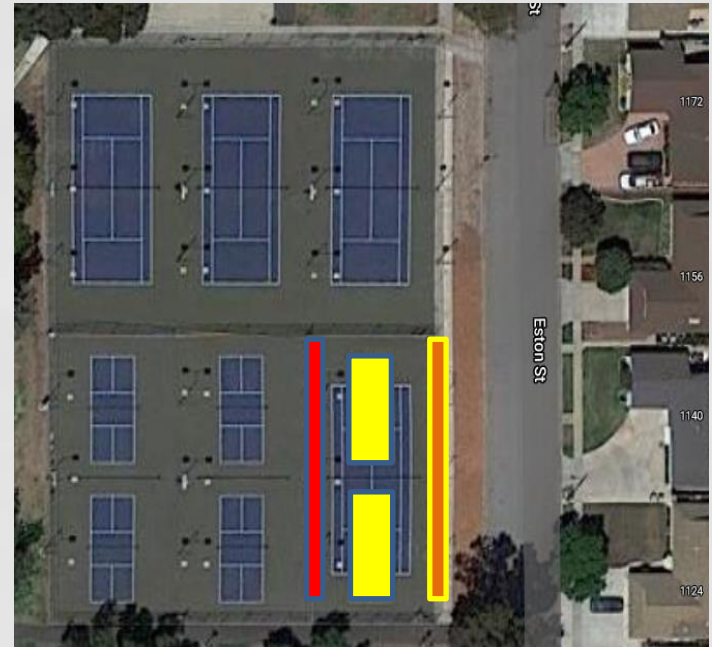
- Long-Term Option A
 - Add noise mitigation nets
 - Fence Supports
 - Est. Total Cost = \$70,000



Bob Kildee Park



- Long Term Option B
 - 2 Dedicated Pickleball Courts
 - Remove Fencing
 - Sound mitigation wall
 - Est. Total = \$112,500 - \$125,000



Bob Kildee Park



- Programmatic Changes for **Handball Courts**
 - Pickleball use Mon – Fri. 8 am – 11 am
 - Eliminates use of 2 handball courts during these times
- Programmatic Changes for **Multi-Use Court**
 - Change Pickleball start time
 - Pilot Program to address dual-use courts during Prime Hours.

Bob Kildee Park



- Pickleball Prime Hours for Multi-Use Court
 - Monday – Friday:
 - 8 am – **11:30** am & 5 pm – 8 pm
 - Saturday:
 - 8 am – **12** pm
- Pilot Program for rules during **Prime Hours**

Pickleball Court Rules – Proposed Pilot Program at Bob Kildee Park



- Note: Below rotation rules apply to all Pickleball Courts (1- 6) during **Prime** hours.
- Pickleball play is on a rotational basis (4 on—4 off) when all courts are in use and players are waiting. Players waiting for a court will place their paddle in the paddle organizer. (“Next” tab moves from left to right)
 1. All players must fully vacate the court at the end of a game. No new game can start without checking the paddle organizer for waiting players.
 2. Players finishing a game must place their paddles in the paddle organizer if they wish to play again. A player may not be on a court playing and also have a paddle in any waiting rotation.

Cont. Pickleball Court Rules – Proposed Pilot Program Bob Kildee Park



3. The next waiting group will take the first available court. All players must be present when their court becomes available.
4. No music may be broadcast on the courts. If players want to listen to music while they play, they must use ear buds or headphones so as not to disturb other players.
5. **Non-Prime Hours.** When others are waiting to use a pickleball court, play shall end on the hour (1:00, 2:00, 3:00 etc.)

Cont. Pickleball Court Rules – Proposed Pilot Program Bob Kildee Park



6. First come, first serve unless reserved
 - District Ordinance 8 & General Use Policy
7. Follow USAPA rules etiquette
8. Tennis and pickleball players are encouraged to use the appropriate dedicated courts prior to using multi-use courts (tennis/pickleball) when vacant.

Analysis – Bob Kildee Park



● Challenges **Handball Courts**

- Limit handball/tennis use during pickleball play
- Only Handball courts in District/Multi-use courts
- Participants must supply their own net
- Increase parking demand
- Increase noise levels close to homes

● Opportunities **Handball Courts**

- Add 2 potential dual use pickleball courts
- Allows for pickleball players to be within same complex

Analysis – Bob Kildee Park



● Challenges **Court Conversion**

- Increase parking demand
- Increase noise levels
- Removes 1 Multi-Use Tennis Court
- Change in hours/rules

● Opportunities **Court Conversion**

- Add 2 more dedicated pickleball courts
- Allows for pickleball players to be within same complex
- Change in hours/rules

Freedom Park

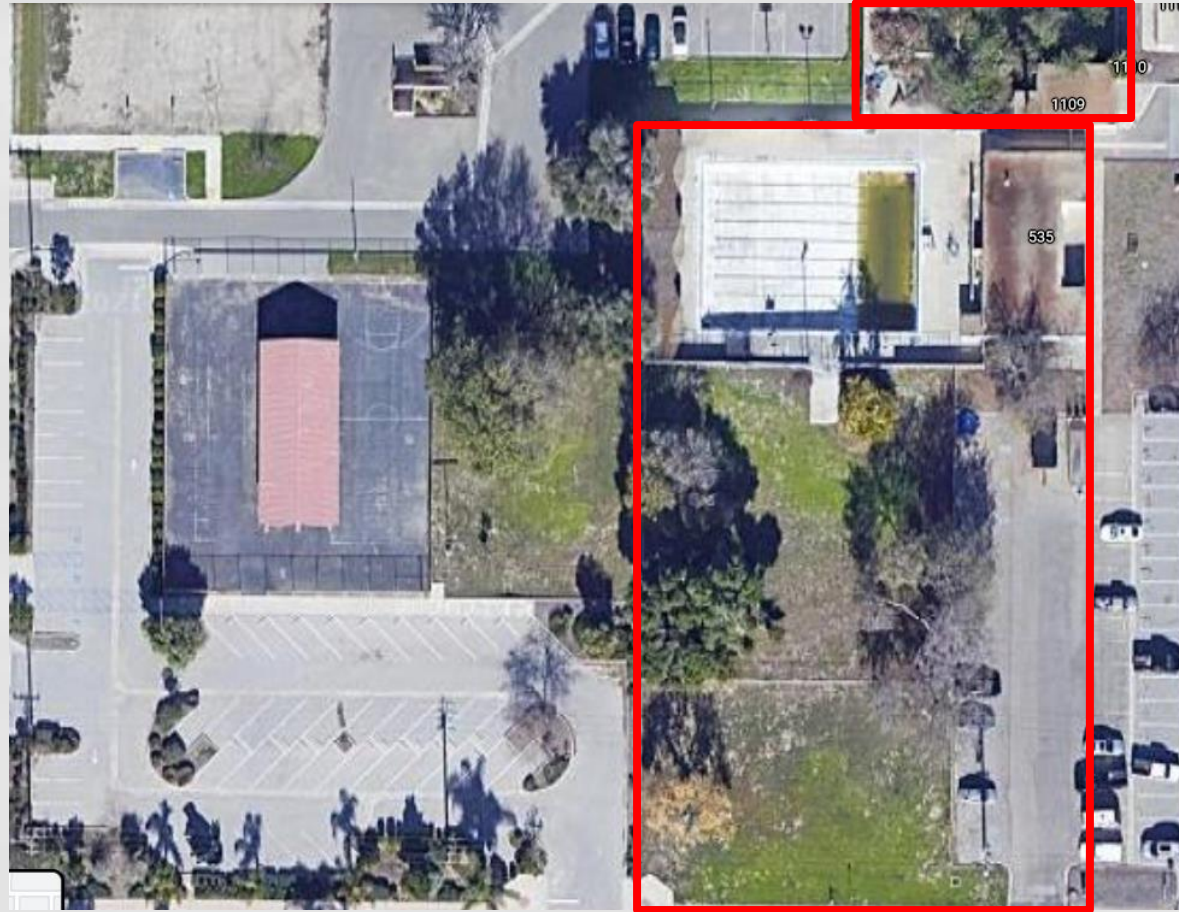
- Long-Term Option A
- Convert picnic shelter and grass area to 6 permanent pickleball courts.
 - \$500,000 +



Freedom Park



- Long Term Option B
 - Convert pool area to pickleball complex
 - \$1M +



Analysis – Freedom Park



● Challenges **Pavilion Area**

- Increase parking demand especially during weekends
- Entire project over \$500K
- Removes backup dog park when Springville is closed

● Opportunities **Pavilion Area**

- Additional 6 dedicated pickleball courts
- Noise not an issue
- Access to restrooms
- Ample parking during non-weekend hours

Analysis – Freedom Park



- **Challenges Freedom Pool Area**
 - Environmental issues with pool
 - Entire project over \$1M
 - Upgrades needed to restrooms/parking
- **Opportunities Freedom Pool Area**
 - Pickleball Complex – 8 plus courts
 - Noise not an issue
 - Access to restrooms
 - Ample parking

Ran Rancho Development



- Long Term Solution
 - 2 yr. to 3 yr. out
 - 4 Dedicated Pickleball courts





Questions & Comments